

Product datasheet for **TA328588**

Ccl2 Rabbit Polyclonal Antibody

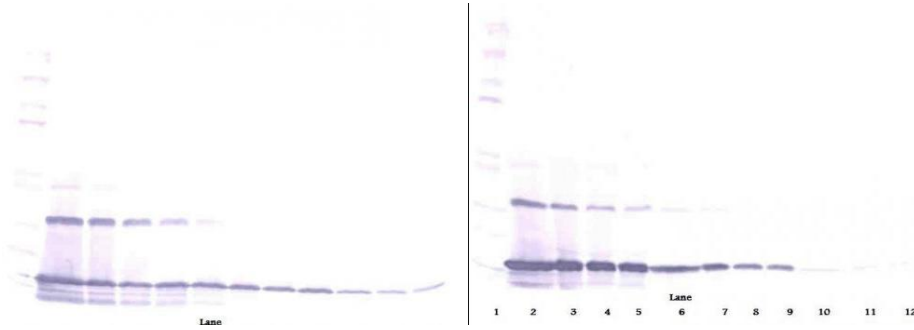
Product data:

Product Type:	Primary Antibodies
Applications:	ELISA, WB
Recommended Dilution:	WB: 0.1-0.2ug/mL, ELISA: 0.25-2ug/mL
Reactivity:	Rat
Host:	Rabbit
Isotype:	IgG
Clonality:	Polyclonal
Immunogen:	E.coli derived Recombinant Rat MCP-1 (CCL2)
Formulation:	A sterile filtered antibody solution was lyophilized from PBS, pH 7.2.
Purification:	Produced from sera of rabbits pre-immunized with highly pure (>98%) recombinant Rat MCP-1(MCAF). Anti-Rat MCP-1(MCAF) specific antibody was purified by affinity chromatography and then biotinylated.
Conjugation:	Biotin
Storage:	Store at -20°C as received.
Stability:	Stable for 12 months from date of receipt.
Gene Name:	C-C motif chemokine ligand 2
Database Link:	NP_113718 Entrez Gene 24770 Rat P14844
Synonyms:	GDCF-2; HC11; HSMCR30; MCAF; MCP-1; MCP1; MGC9434; SCYA2; SMC-CF

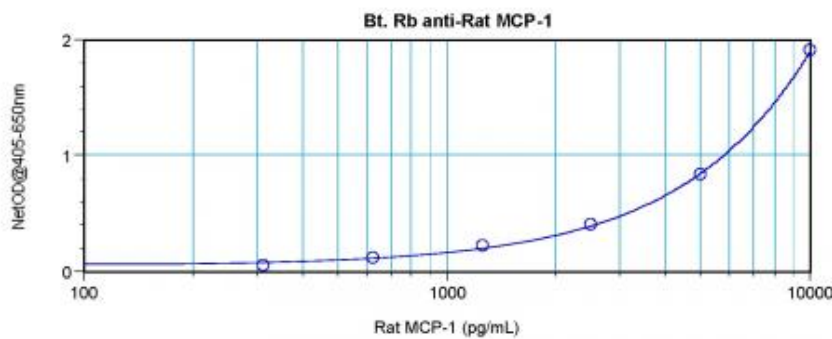


[View online »](#)

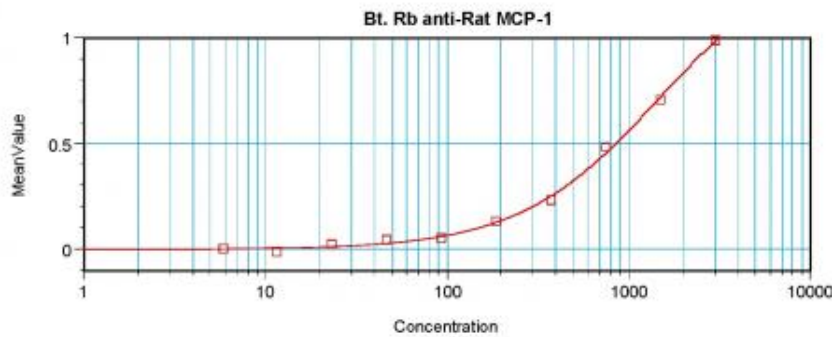
Product images:



To detect Rat MCP-1 (MCAF) by direct ELISA (using 100 ul/well antibody solution) a concentration of 0.25-1.0 ug/ml of this antibody is required. This biotinylated polyclonal antibody, in conjunction with compatible secondary reagents, allows the detection of at least 0.2-0.4 ng/well of recombinant Rat MCP-1 (MCAF).



To detect Rat MCP-1 (MCAF) by direct ELISA (using 100 ul/well antibody solution) a concentration of 0.25-1.0 ug/ml of this antibody is required. This biotinylated polyclonal antibody, in conjunction with compatible secondary reagents, allows the detection of at least 0.2-0.4 ng/well of recombinant Rat MCP-1 (MCAF).



To detect Rat MCP-1 (MCAF) by sandwich ELISA (using 100 ul/well antibody solution) a concentration of 0.25-1.0 ug/ml of this antibody is required. This biotinylated polyclonal antibody, in conjunction with Polyclonal Anti-Rat MCP-1 (MCAF) ([TA328589]) as a capture antibody, allows the detection of at least 0.2-0.4 ng/well of recombinant Rat MCP-1 (MCAF).