

Product datasheet for **TA328581**

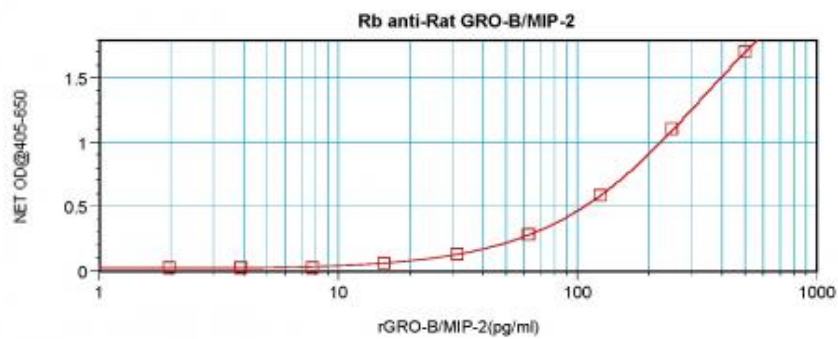
Cxcl2 Rabbit Polyclonal Antibody

Product data:

Product Type:	Primary Antibodies
Applications:	ELISA
Recommended Dilution:	WB: 0.1-0.2ug/mL, ELISA: 0.25-2ug/mL
Reactivity:	Rat
Host:	Rabbit
Isotype:	IgG
Clonality:	Polyclonal
Immunogen:	E.coli derived Recombinant Rat GRO- β /MIP-2 (CXCL2)
Formulation:	A sterile filtered antibody solution was lyophilized from PBS, pH 7.2.
Purification:	Produced from sera of rabbits pre-immunized with highly pure recombinant Rat GRObeta/MIP-2. Anti-Rat GRObeta/MIP-2 specific antibody was purified by affinity chromatography employing immobilized Rat GRObeta/MIP-2 matrix.
Conjugation:	Unconjugated
Storage:	Store at -20°C as received.
Stability:	Stable for 12 months from date of receipt.
Gene Name:	C-X-C motif chemokine ligand 2
Database Link:	NP_446099 Entrez Gene 114105 Rat P30348
Synonyms:	CINC-2a; Gro-beta; GRO2; GROb; MGSA-b; MIP-2a; MIP2; MIP2-alpha; MIP2A; SCYB2
Note:	Neutralization: To yield one-half maximal inhibition [ND50] of the biological activity of Rat GRObeta/MIP-2 (100 ng/ml), a concentration of 3.0-5.0 \leq ug/ml of this antibody is required.



[View online »](#)

Product images:

To detect Rat GRObeta/MIP-2 by sandwich ELISA (using 100 ul/well antibody solution) a concentration of 0.5 - 2.0 ug/ml of this antibody is required. This antigen affinity purified antibody, in conjunction with Biotinylated Anti-Rat GRObeta/MIP-2 ([TA328580]) as a detection antibody, allows the detection of at least 0.2 - 0.4 ng/well of recombinant Rat GRObeta/MIP-2.