

Product datasheet for **TA328580**

Cxcl2 Rabbit Polyclonal Antibody

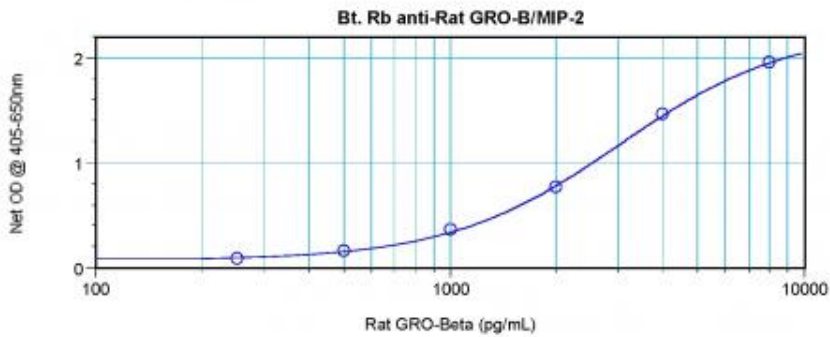
Product data:

Product Type:	Primary Antibodies
Applications:	ELISA
Recommended Dilution:	WB: 0.1-0.2ug/mL, ELISA: 0.25-2ug/mL
Reactivity:	Rat
Host:	Rabbit
Isotype:	IgG
Clonality:	Polyclonal
Immunogen:	E.coli derived Recombinant Rat GRO- β /MIP-2 (CXCL2)
Formulation:	A sterile filtered antibody solution was lyophilized from PBS, pH 7.2.
Purification:	Produced from sera of rabbits pre-immunized with highly pure (>98%) recombinant Rat GRO-beta/MIP-2. Anti-Rat GRO-beta/MIP-2 specific antibody was purified by affinity chromatography and then biotinylated.
Conjugation:	Biotin
Storage:	Store at -20°C as received.
Stability:	Stable for 12 months from date of receipt.
Gene Name:	C-X-C motif chemokine ligand 2
Database Link:	NP_446099 Entrez Gene 114105 Rat P30348
Synonyms:	CINC-2a; Gro-beta; GRO2; GROb; MGSA-b; MIP-2a; MIP2; MIP2-alpha; MIP2A; SCYB2

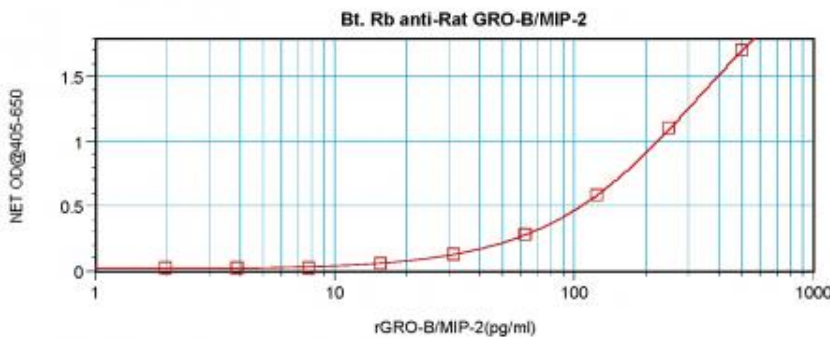


[View online »](#)

Product images:



To detect Rat GRO-beta/MIP-2 by direct ELISA (using 100 ul/well antibody solution) a concentration of 0.25-1.0 ug/ml of this antibody is required. This biotinylated polyclonal antibody, in conjunction with compatible secondary reagents, allows the detection of at least 0.2-0.4 ng/well of recombinant Rat GRO-beta/MIP-2.



To detect Rat GRO-beta/MIP-2 by sandwich ELISA (using 100 ul/well antibody solution) a concentration of 0.25-1.0 ug/ml of this antibody is required. This biotinylated polyclonal antibody, in conjunction with Polyclonal Anti-Rat GRO-beta/MIP-2 ([TA328581]) as a capture antibody, allows the detection of at least 0.2-0.4 ng/well of recombinant Rat GRO-beta/MIP-2.