

Product datasheet for **TA328578**

Cxcl1 Rabbit Polyclonal Antibody

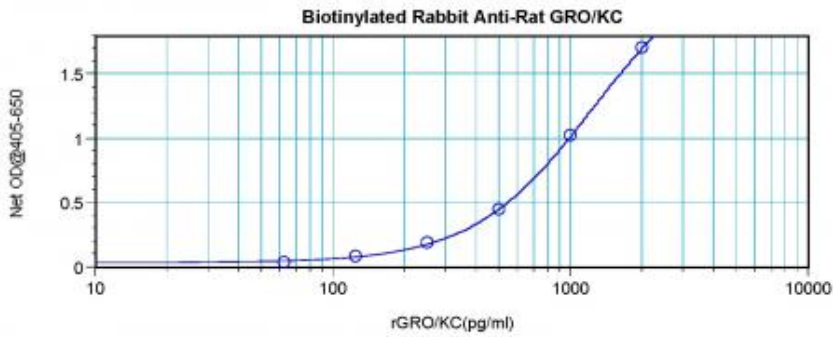
Product data:

Product Type:	Primary Antibodies
Applications:	ELISA
Recommended Dilution:	WB: 0.1-0.2ug/mL, ELISA: 0.25-2ug/mL
Reactivity:	Rat
Host:	Rabbit
Isotype:	IgG
Clonality:	Polyclonal
Immunogen:	E.coli derived Recombinant Rat GRO/KC (CXCL1)
Formulation:	A sterile filtered antibody solution was lyophilized from PBS, pH 7.2.
Purification:	Produced from sera of rabbits pre-immunized with highly pure recombinant Rat GRO/KC. Anti-Rat GRO/KC specific antibody was purified by affinity chromatography and then biotinylated.
Conjugation:	Biotin
Storage:	Store at -20°C as received.
Stability:	Stable for 12 months from date of receipt.
Gene Name:	chemokine (C-X-C motif) ligand 1
Database Link:	NP_110472 Entrez Gene 81503 Rat P14095
Synonyms:	FSP; GRO; GRO-alpha(1-73); GRO1; GROa; MGSA; MGSA-a; NAP-3; SCYB1

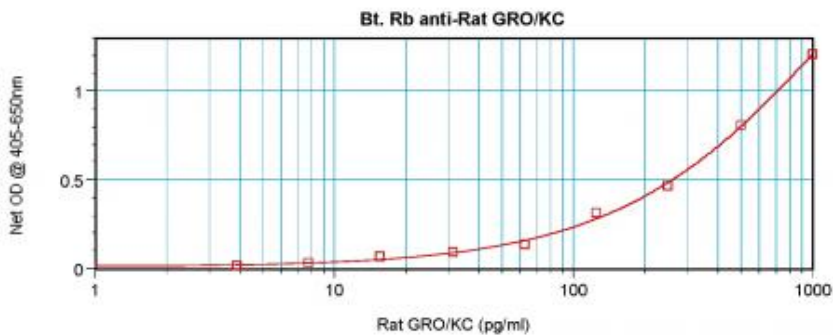


[View online »](#)

Product images:



To detect Rat GRO/KC by direct ELISA (using 100 ul/well antibody solution) a concentration of 0.25-1.0 ug/ml of this antibody is required. This biotinylated polyclonal antibody, in conjunction with compatible secondary reagents, allows the detection of at least 0.2-0.4 ng/well of recombinant Rat GRO/KC.



To detect Rat GRO/KC by sandwich ELISA (using 100 ul/well antibody solution) a concentration of 0.25-1.0 ug/ml of this antibody is required. This biotinylated polyclonal antibody, in conjunction with Polyclonal Anti-Rat GRO/KC ([TA328579]) as a capture antibody, allows the detection of at least 0.2-0.4 ng/well of recombinant Rat GRO/KC.