

Product datasheet for **TA328567**

IL2 Rabbit Polyclonal Antibody

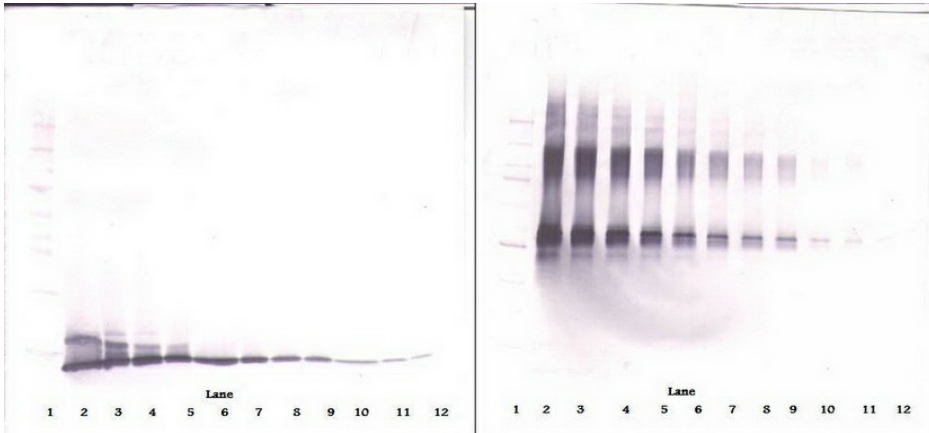
Product data:

Product Type:	Primary Antibodies
Applications:	ELISA, WB
Recommended Dilution:	WB: 0.1-0.2ug/mL, ELISA: 0.25-2ug/mL
Reactivity:	Rat
Host:	Rabbit
Isotype:	IgG
Clonality:	Polyclonal
Immunogen:	E.coli derived Recombinant Rat IL-2
Formulation:	A sterile filtered antibody solution was lyophilized from PBS, pH 7.2.
Purification:	Produced from sera of rabbits pre-immunized with highly pure (>98%) recombinant Rat IL-2. Anti-Rat IL-2 specific antibody was purified by affinity chromatography employing immobilized Rat IL-2 matrix.
Conjugation:	Unconjugated
Storage:	Store at -20°C as received.
Stability:	Stable for 12 months from date of receipt.
Gene Name:	interleukin 2
Database Link:	NP 446288 Entrez Gene 116562 Rat P17108
Synonyms:	aldesleukin; IL-2; interleukin-2; lymphokine; TCGF
Note:	Neutralization: To yield one-half maximal inhibition [ND50] of the biological activity of Rat IL-2 (1.0 ng/ml), a concentration of < 0.1 ug/ml of this antibody is required.

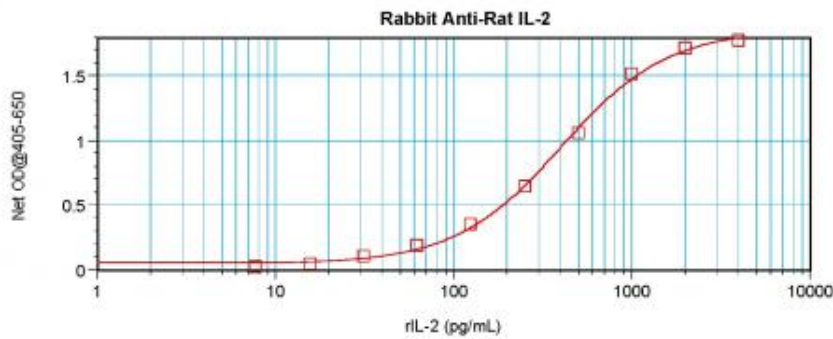


[View online »](#)

Product images:



To detect Rat IL-2 by sandwich ELISA (using 100ul/well antibody solution) a concentration of 0.5 - 2.0 ug/ml of this antibody is required. This antigen affinity purified antibody, in conjunction with Biotinylated Anti-Rat IL-2 ([TA328566]) as a detection antibody, allows the detection of at least 0.2 - 0.4 ng/well of recombinant Rat IL-2.



To detect Rat IL-2 by sandwich ELISA (using 100ul/well antibody solution) a concentration of 0.5 - 2.0 ug/ml of this antibody is required. This antigen affinity purified antibody, in conjunction with Biotinylated Anti-Rat IL-2 ([TA328566]) as a detection antibody, allows the detection of at least 0.2 - 0.4 ng/well of recombinant Rat IL-2.