

Product datasheet for **TA328565**

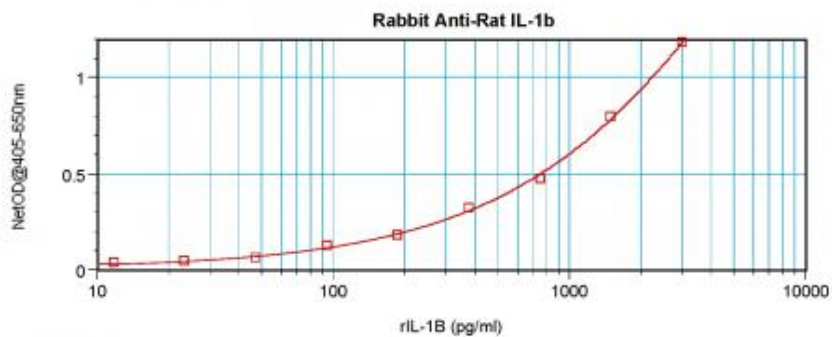
IL1b Rabbit Polyclonal Antibody

Product data:

Product Type:	Primary Antibodies
Applications:	ELISA
Recommended Dilution:	WB: 0.1-0.2ug/mL, ELISA: 0.25-2ug/mL, IHC: 0.25ug/mL - 1mg/mL
Reactivity:	Rat
Host:	Rabbit
Isotype:	IgG
Clonality:	Polyclonal
Immunogen:	E.coli derived Recombinant Rat IL-1 β
Formulation:	A sterile filtered antibody solution was lyophilized from PBS, pH 7.2.
Purification:	Produced from sera of rabbits immunized with highly pure recombinant Rat IL.1beta. Anti-Rat IL.1beta specific antibody was purified by affinity chromatography employing an immobilized Rat IL.1beta matrix.
Conjugation:	Unconjugated
Storage:	Store at -20°C as received.
Stability:	Stable for 12 months from date of receipt.
Gene Name:	interleukin 1 beta
Database Link:	NP_113700 Entrez Gene 24494 Rat
Synonyms:	catabolin; IL-1; IL-1B; IL1-BETA; IL1F2; pro-interleukin-1-beta
Note:	Neutralization: To yield one-half maximal inhibition [ND50] of the biological activity of Rat IL-1beta (0.20 ng/ml), a concentration of 0.09-0.14 \leq ug/ml of this antibody is required.



[View online »](#)

Product images:

To detect Rat IL-1beta by sandwich ELISA (using 100 ul/well antibody solution) a concentration of 0.5 - 2.0 ug/ml of this antibody is required. This antigen affinity purified antibody, in conjunction with Biotinylated Anti-Rat IL-1beta ([TA328564]) as a detection antibody, allows the detection of at least 0.2 - 0.4 ng/well of recombinant Rat IL-1beta.