

Product datasheet for **TA328557**

Kitl Rabbit Polyclonal Antibody

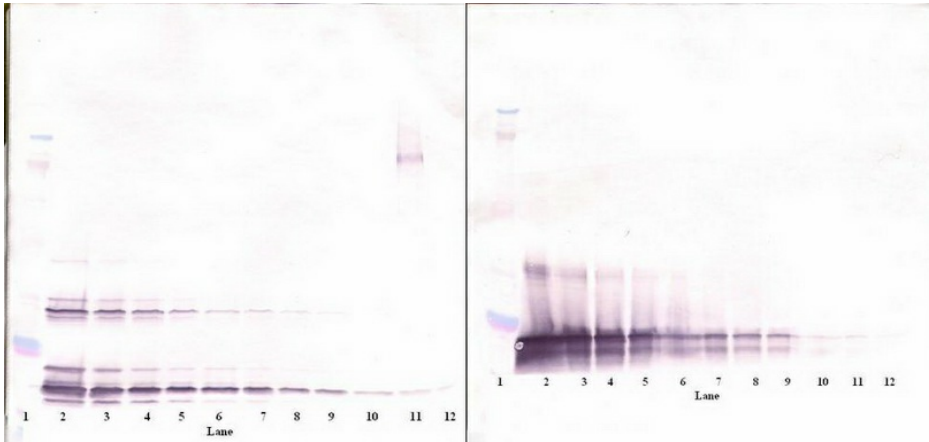
Product data:

Product Type:	Primary Antibodies
Applications:	ELISA, WB
Recommended Dilution:	WB: 0.1-0.2ug/mL, ELISA: 0.25-2ug/mL
Reactivity:	Murine
Host:	Rabbit
Isotype:	IgG
Clonality:	Polyclonal
Immunogen:	E.coli derived Recombinant Murine SCF
Formulation:	A sterile filtered antibody solution was lyophilized from PBS, pH 7.2.
Purification:	Produced from sera of rabbits pre-immunized with highly pure (>98%) recombinant mSCF. Anti-Murine SCF specific antibody was purified by affinity chromatography employing immobilized mSCF matrix.
Conjugation:	Unconjugated
Storage:	Store at -20°C as received.
Stability:	Stable for 12 months from date of receipt.
Gene Name:	kit ligand
Database Link:	NP_038626 Entrez Gene 17311 Mouse P20826
Synonyms:	Clo; Con; contrasted; Gb; Kitlg; Mgf; SCF; SF; Sl; SLF
Note:	Neutralization: To yield one-half maximal inhibition [ND50] of the biological activity of mSCF (20.0 ng/ml), a concentration of 0.64-0.97 <=ug/ml of this antibody is required.

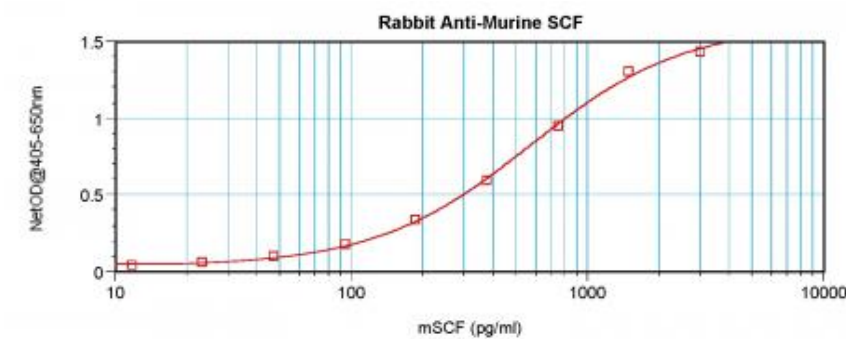


[View online »](#)

Product images:



To detect mSCF by sandwich ELISA (using 100 ul/well antibody solution) a concentration of 0.5 - 2.0 ug/ml of this antibody is required. This antigen affinity purified antibody, in conjunction with Biotinylated Anti-Murine SCF ([TA328556]) as a detection antibody, allows the detection of at least 0.2 - 0.4 ng/well of recombinant mSCF.



To detect mSCF by sandwich ELISA (using 100 ul/well antibody solution) a concentration of 0.5 - 2.0 ug/ml of this antibody is required. This antigen affinity purified antibody, in conjunction with Biotinylated Anti-Murine SCF ([TA328556]) as a detection antibody, allows the detection of at least 0.2 - 0.4 ng/well of recombinant mSCF.