

Product datasheet for **TA328556**

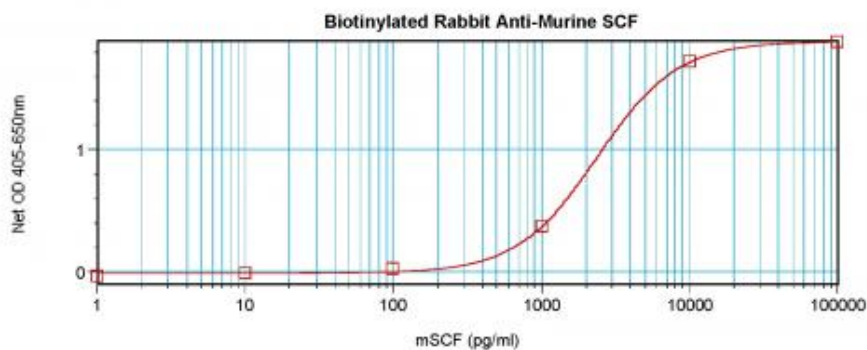
Kitl Rabbit Polyclonal Antibody

Product data:

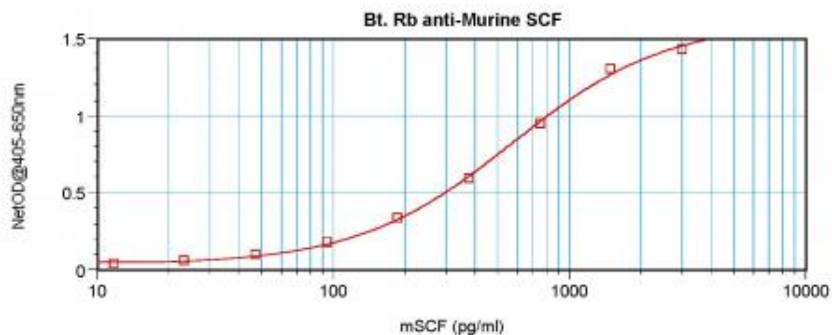
Product Type:	Primary Antibodies
Applications:	ELISA
Recommended Dilution:	WB: 0.1-0.2ug/mL, ELISA: 0.25-2ug/mL
Reactivity:	Murine
Host:	Rabbit
Isotype:	IgG
Clonality:	Polyclonal
Immunogen:	E.coli derived Recombinant Murine SCF
Formulation:	A sterile filtered antibody solution was lyophilized from PBS, pH 7.2.
Purification:	Produced from sera of rabbits pre-immunized with highly pure (>98%) recombinant mSCF. Anti-Murine SCF specific antibody was purified by affinity chromatography and then biotinylated.
Conjugation:	Biotin
Storage:	Store at -20°C as received.
Stability:	Stable for 12 months from date of receipt.
Gene Name:	kit ligand
Database Link:	NP_038626 Entrez Gene 17311 Mouse P20826
Synonyms:	Clo; Con; contrasted; Gb; Kitlg; Mgf; SCF; SF; Sl; SLF



[View online »](#)

Product images:

To detect mSCF by direct ELISA (using 100 μ l/well antibody solution) a concentration of 0.25-1.0 μ g/ml of this antibody is required. This biotinylated polyclonal antibody, in conjunction with compatible secondary reagents, allows the detection of at least 0.2-0.4 ng/well of recombinant mSCF.



To detect mSCF by sandwich ELISA (using 100 μ l/well antibody solution) a concentration of 0.25-1.0 μ g/ml of this antibody is required. This biotinylated polyclonal antibody, in conjunction with Polyclonal Anti-Murine SCF ([TA328557]) as a capture antibody, allows the detection of at least 0.2-0.4 ng/well of recombinant mSCF.