

## Product datasheet for **TA328552**

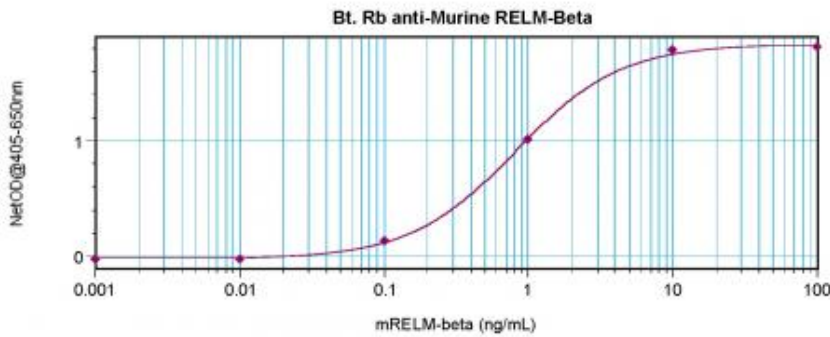
### Retnlb Rabbit Polyclonal Antibody

#### Product data:

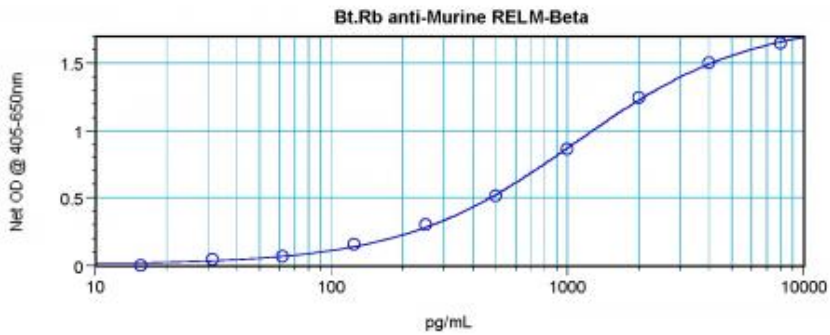
Product Type:	Primary Antibodies
Applications:	ELISA
Recommended Dilution:	WB: 0.1-0.2ug/mL, ELISA: 0.25-2ug/mL
Reactivity:	Murine
Host:	Rabbit
Isotype:	IgG
Clonality:	Polyclonal
Immunogen:	E.coli derived Recombinant Murine RELM $\beta$
Formulation:	A sterile filtered antibody solution was lyophilized from PBS, pH 7.2.
Purification:	Produced from sera of rabbits pre-immunized with highly pure recombinant Murine RELM $\beta$ . Anti-Murine RELM $\beta$ specific antibody was purified by affinity chromatography and then biotinylated.
Conjugation:	Biotin
Storage:	Store at -20°C as received.
Stability:	Stable for 12 months from date of receipt.
Gene Name:	resistin like beta
Database Link:	<a href="#">NP_076370</a> <a href="#">Entrez Gene 57263 Mouse</a> <a href="#">Q99P86</a>
Synonyms:	CCRG; FIZZ1; FIZZ2; HXCP2; RELM-beta; RELMb; RELMbeta; RETNL2; XCP2



[View online »](#)

**Product images:**


To detect Murine RELMbeta by direct ELISA (using 100 ul/well antibody solution) a concentration of 0.25-1.0 ug/ml of this antibody is required. This biotinylated polyclonal antibody, in conjunction with compatible secondary reagents, allows the detection of at least 0.2-0.4 ng/well of recombinant Murine RELMbeta.



To detect Murine RELMbeta by sandwich ELISA (using 100 ul/well antibody solution) a concentration of 0.25-1.0 ug/ml of this antibody is required. This biotinylated polyclonal antibody, in conjunction with Polyclonal Anti-Murine RELMbeta ([TA328553]) as a capture antibody, allows the detection of at least 0.2-0.4 ng/well of recombinant Murine RELMbeta.