

## Product datasheet for **TA328551**

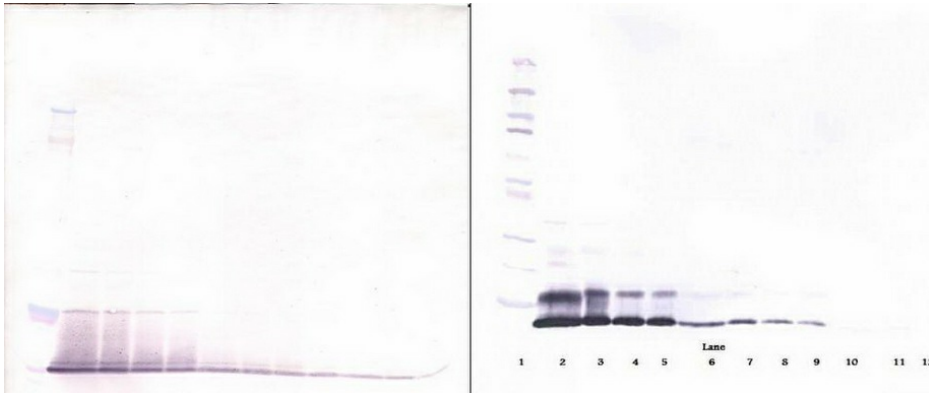
### Retnla Rabbit Polyclonal Antibody

#### Product data:

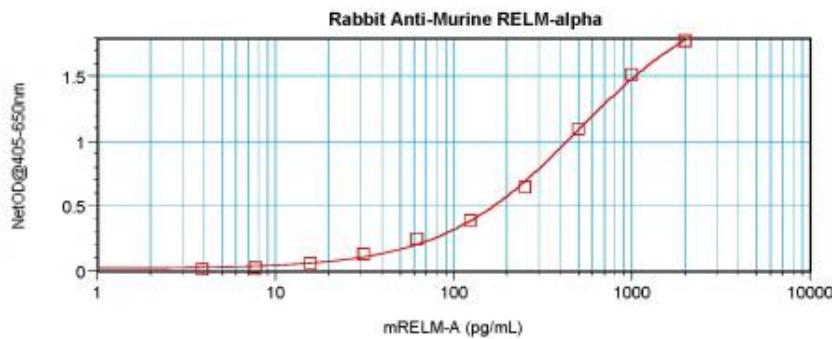
Product Type:	Primary Antibodies
Applications:	ELISA, IHC, WB
Recommended Dilution:	WB: 0.1-0.2ug/mL, ELISA: 0.25-2ug/mL, IHC: 0.25ug/mL - 1mg/mL
Reactivity:	Murine
Host:	Rabbit
Isotype:	IgG
Clonality:	Polyclonal
Immunogen:	E.coli derived Recombinant Murine RELMÎ±
Formulation:	A sterile filtered antibody solution was lyophilized from PBS, pH 7.2.
Purification:	Produced from sera of rabbits pre-immunized with highly pure recombinant Murine RELMalpha. Anti-Murine RELMalpha specific antibody was purified by affinity chromatography employing immobilized Murine RELMalpha matrix.
Conjugation:	Unconjugated
Storage:	Store at -20°C as received.
Stability:	Stable for 12 months from date of receipt.
Gene Name:	resistin like alpha
Database Link:	<a href="#">NP_065255</a> <a href="#">Entrez Gene 57262 Mouse</a> <a href="#">Q9EP95</a>
Synonyms:	1810019L16Rik; Fizz-1; Fizz1; HIMF; Himf; RELM-alpha; RELMa; RELMalpha; Xcp2



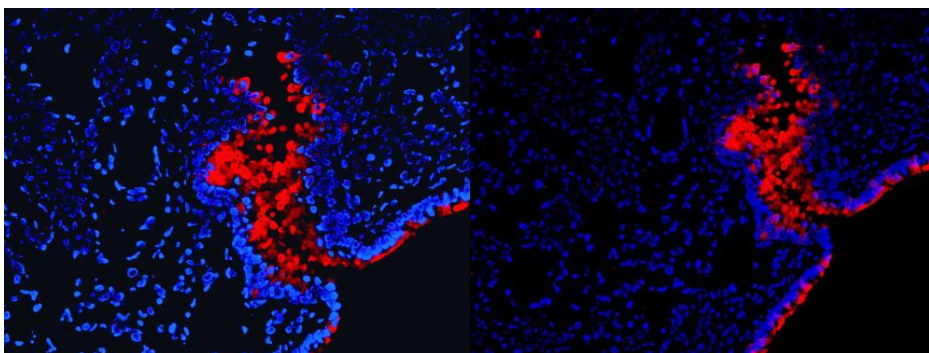
[View online »](#)

**Product images:**


To detect Murine RELMalpha; by sandwich ELISA (using 100 ul/well antibody solution) a concentration of 0.5 - 2.0 ug/ml of this antibody is required. This antigen affinity purified antibody, in conjunction with Biotinylated Anti-Murine RELMalpha; ([TA328550]) as a detection antibody, allows the detection of at least 0.2 - 0.4 ng/well of recombinant Murine RELMalpha;.



To detect Murine RELMalpha; by sandwich ELISA (using 100 ul/well antibody solution) a concentration of 0.5 - 2.0 ug/ml of this antibody is required. This antigen affinity purified antibody, in conjunction with Biotinylated Anti-Murine RELMalpha; ([TA328550]) as a detection antibody, allows the detection of at least 0.2 - 0.4 ng/well of recombinant Murine RELMalpha;.



To detect Murine RELMalpha; by sandwich ELISA (using 100 ul/well antibody solution) a concentration of 0.5 - 2.0 ug/ml of this antibody is required. This antigen affinity purified antibody, in conjunction with Biotinylated Anti-Murine RELMalpha; ([TA328550]) as a detection antibody, allows the detection of at least 0.2 - 0.4 ng/well of recombinant Murine RELMalpha;.