

Product datasheet for **TA328550**

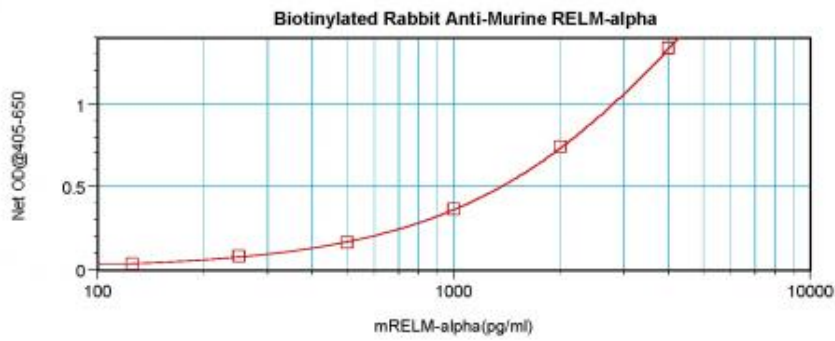
Retnla Rabbit Polyclonal Antibody

Product data:

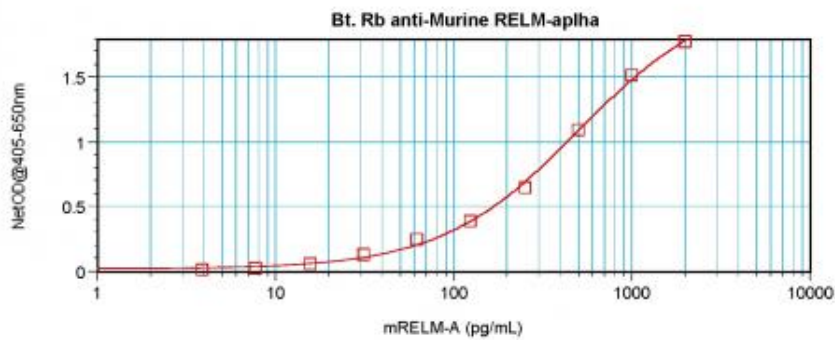
Product Type:	Primary Antibodies
Applications:	ELISA
Recommended Dilution:	WB: 0.1-0.2ug/mL, ELISA: 0.25-2ug/mL
Reactivity:	Murine
Host:	Rabbit
Isotype:	IgG
Clonality:	Polyclonal
Immunogen:	E.coli derived Recombinant Murine RELMÎ±
Formulation:	A sterile filtered antibody solution was lyophilized from PBS, pH 7.2.
Purification:	Produced from sera of rabbits pre-immunized with highly pure recombinant Murine RELMalpha. Anti-Murine RELMalpha specific antibody was purified by affinity chromatography and then biotinylated.
Conjugation:	Biotin
Storage:	Store at -20°C as received.
Stability:	Stable for 12 months from date of receipt.
Gene Name:	resistin like alpha
Database Link:	NP_065255 Entrez Gene 57262 Mouse Q9EP95
Synonyms:	1810019L16Rik; Fizz-1; Fizz1; HIMF; Himf; RELM-alpha; RELMa; RELMalpha; Xcp2



[View online »](#)

Product images:


To detect Murine RELMalpha; by direct ELISA (using 100 ul/well antibody solution) a concentration of 0.25-1.0 ug/ml of this antibody is required. This biotinylated polyclonal antibody, in conjunction with compatible secondary reagents, allows the detection of at least 0.2-0.4 ng/well of recombinant Murine RELMalpha;.



To detect Murine RELMalpha; by sandwich ELISA (using 100 ul/well antibody solution) a concentration of 0.25-1.0 ug/ml of this antibody is required. This biotinylated polyclonal antibody, in conjunction with Polyclonal Anti-Murine RELMalpha; ([TA328551]) as a capture antibody, allows the detection of at least 0.2-0.4 ng/well of recombinant Murine RELMalpha;.