

## Product datasheet for **TA328543**

### Ccl9 Rabbit Polyclonal Antibody

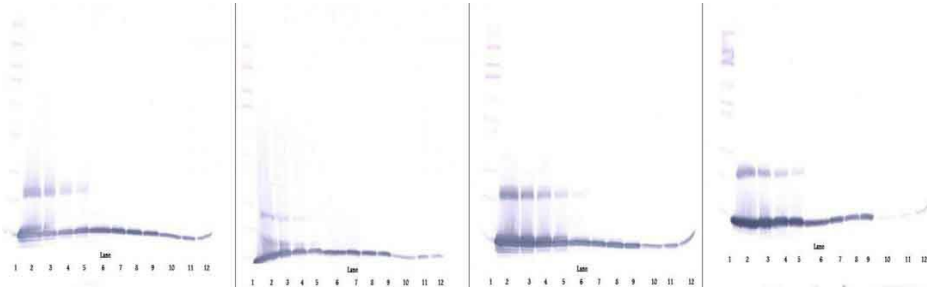
#### Product data:

Product Type:	Primary Antibodies
Applications:	ELISA, WB
Recommended Dilution:	WB: 0.1-0.2ug/mL, ELISA: 0.25-2ug/mL
Reactivity:	Murine
Host:	Rabbit
Isotype:	IgG
Clonality:	Polyclonal
Immunogen:	E.coli derived Recombinant Murine MIP-1 $\beta$ (CCL9/CCL10)
Formulation:	A sterile filtered antibody solution was lyophilized from PBS, pH 7.2.
Purification:	Produced from sera of rabbits pre-immunized with highly pure recombinant Murine MIP-1gamma. Anti-Murine MIP-1gamma specific antibody was purified by affinity chromatography employing immobilized Murine MIP-1gamma matrix.
Conjugation:	Unconjugated
Storage:	Store at -20°C as received.
Stability:	Stable for 12 months from date of receipt.
Gene Name:	chemokine (C-C motif) ligand 9
Database Link:	<a href="#">NP_035468</a> <a href="#">Entrez Gene 20308 Mouse</a> <a href="#">P51670</a>
Synonyms:	CCF18; MGC108969; MRP-2; Scya9; Scya10

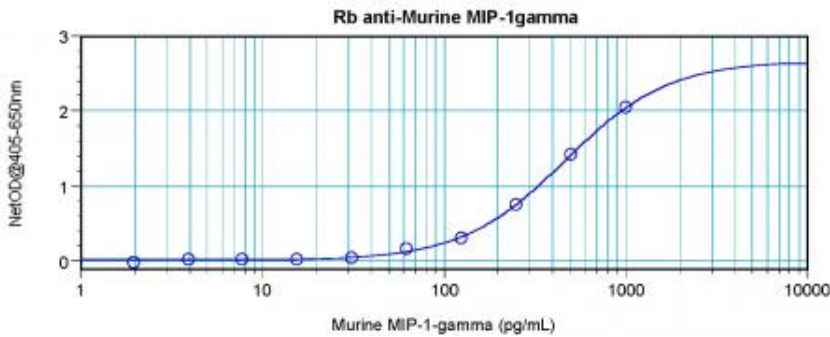


[View online »](#)

Product images:



To detect Murine MIP-1gamma; by sandwich ELISA (using 100 ul/well antibody solution) a concentration of 0.5 - 2.0 ug/ml of this antibody is required. This antigen affinity purified antibody, in conjunction with Biotinylated Anti-Murine MIP-1gamma; ([TA328542]) as a detection antibody, allows the detection of at least 0.2 - 0.4 ng/well of recombinant Murine MIP-1gamma;



To detect Murine MIP-1gamma; by sandwich ELISA (using 100 ul/well antibody solution) a concentration of 0.5 - 2.0 ug/ml of this antibody is required. This antigen affinity purified antibody, in conjunction with Biotinylated Anti-Murine MIP-1gamma; ([TA328542]) as a detection antibody, allows the detection of at least 0.2 - 0.4 ng/well of recombinant Murine MIP-1gamma;