

Product datasheet for **TA328541**

Ccl4 Rabbit Polyclonal Antibody

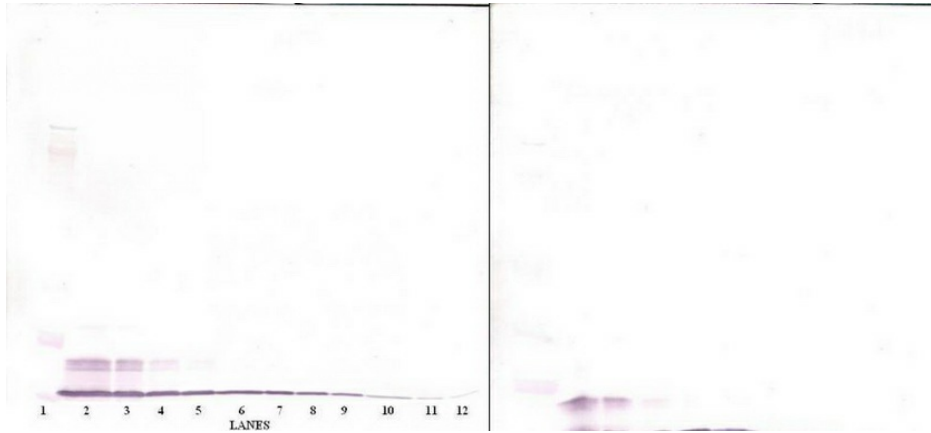
Product data:

Product Type:	Primary Antibodies
Applications:	ELISA, WB
Recommended Dilution:	WB: 0.1-0.2ug/mL, ELISA: 0.25-2ug/mL
Reactivity:	Murine
Host:	Rabbit
Isotype:	IgG
Clonality:	Polyclonal
Immunogen:	E.coli derived Recombinant Murine MIP-1 β (CCL4)
Formulation:	A sterile filtered antibody solution was lyophilized from PBS, pH 7.2.
Purification:	Produced from sera of rabbits pre-immunized with highly pure recombinant Murine MIP-1beta. Anti-Murine MIP-1beta specific antibody was purified by affinity chromatography employing immobilized Murine MIP-1beta matrix.
Conjugation:	Unconjugated
Storage:	Store at -20°C as received.
Stability:	Stable for 12 months from date of receipt.
Gene Name:	chemokine (C-C motif) ligand 4
Database Link:	NP_038680 Entrez Gene 20303 Mouse P14097
Synonyms:	ACT-2; ACT2; AT744.1; G-26; HC21; LAG-1; LAG1; MGC104418; MGC126025; MGC126026; MIP-1-beta; MIP-1-beta(1-69); MIP1B; MIP1B1; SCYA2; SCYA4; SIS-gamma
Note:	Neutralization: To yield one-half maximal inhibition [ND50] of the biological activity of Murine MIP-1beta (100.0 ng/ml), a concentration of 8.0-10.0 ug/ml of this antibody is required.

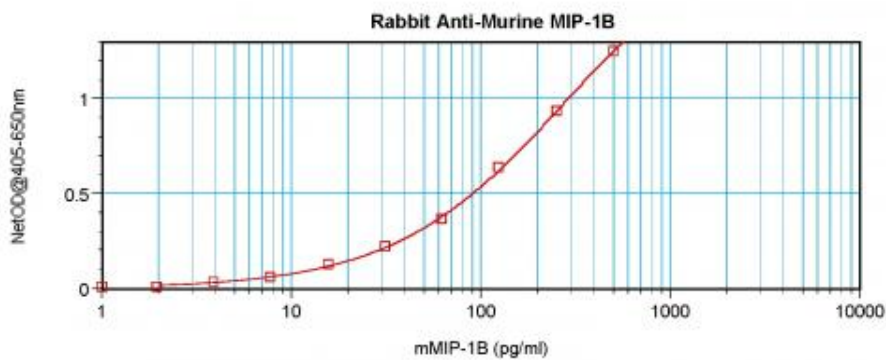


[View online »](#)

Product images:



To detect Murine MIP-1beta by sandwich ELISA (using 100 ul/well antibody solution) a concentration of 0.5 - 2.0 ug/ml of this antibody is required. This antigen affinity purified antibody, in conjunction with Biotinylated Anti-Murine MIP-1beta ([TA328540]) as a detection antibody, allows the detection of at least 0.2 - 0.4 ng/well of recombinant Murine MIP-1beta.



To detect Murine MIP-1beta by sandwich ELISA (using 100 ul/well antibody solution) a concentration of 0.5 - 2.0 ug/ml of this antibody is required. This antigen affinity purified antibody, in conjunction with Biotinylated Anti-Murine MIP-1beta ([TA328540]) as a detection antibody, allows the detection of at least 0.2 - 0.4 ng/well of recombinant Murine MIP-1beta.