

Product datasheet for **TA328537**

Ccl22 Rabbit Polyclonal Antibody

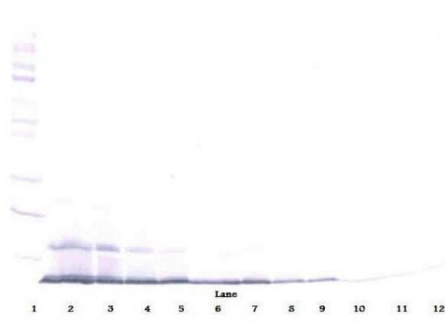
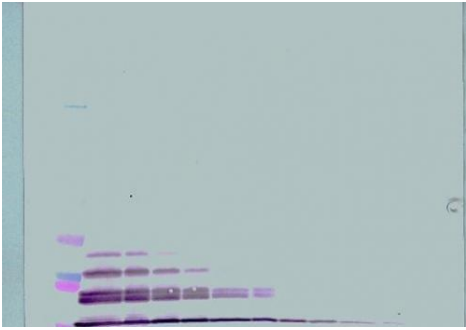
Product data:

Product Type:	Primary Antibodies
Applications:	ELISA, WB
Recommended Dilution:	WB: 0.1-0.2ug/mL, ELISA: 0.25-2ug/mL
Reactivity:	Murine
Host:	Rabbit
Isotype:	IgG
Clonality:	Polyclonal
Immunogen:	E.coli derived Recombinant Murine MDC (CCL22)
Formulation:	A sterile filtered antibody solution was lyophilized from PBS, pH 7.2.
Purification:	Produced from sera of rabbits pre-immunized with highly pure (>98%) recombinant mMDC. Anti-Murine MDC specific antibody was purified by affinity chromatography employing immobilized mMDC matrix.
Conjugation:	Unconjugated
Storage:	Store at -20°C as received.
Stability:	Stable for 12 months from date of receipt.
Gene Name:	chemokine (C-C motif) ligand 22
Database Link:	NP_033163 Entrez Gene 20299 Mouse O88430
Synonyms:	A-152E5.1; ABCD-1; DC/B-CK; MDC; MDC(1-69); MGC34554; SCYA22; STCP-1
Note:	Neutralization: To yield one-half maximal inhibition [ND50] of the biological activity of mMDC (100 ng/ml), a concentration of 6-9 <=ug/ml of this antibody is required.

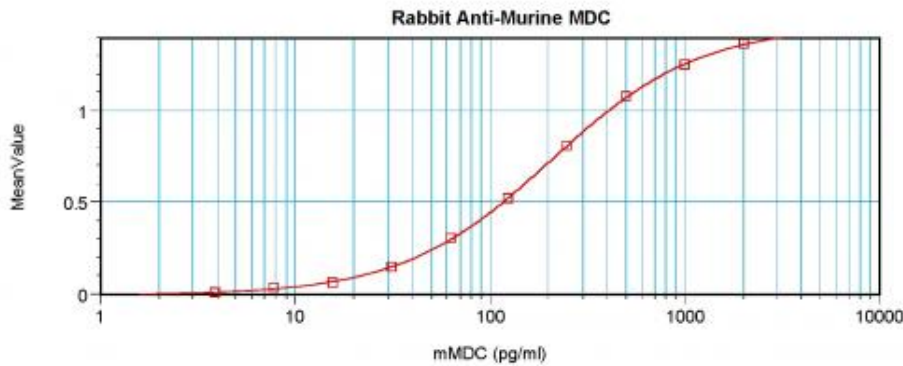


[View online »](#)

Product images:



To detect mMDC by sandwich ELISA (using 100 ul/well antibody solution) a concentration of 0.5 - 2.0 ug/ml of this antibody is required. This antigen affinity purified antibody, in conjunction with Biotinylated Anti-Murine MDC ([TA328536]) as a detection antibody, allows the detection of at least 0.2 - 0.4 ng/well of recombinant mMDC.



To detect mMDC by sandwich ELISA (using 100 ul/well antibody solution) a concentration of 0.5 - 2.0 ug/ml of this antibody is required. This antigen affinity purified antibody, in conjunction with Biotinylated Anti-Murine MDC ([TA328536]) as a detection antibody, allows the detection of at least 0.2 - 0.4 ng/well of recombinant mMDC.