

## Product datasheet for **TA328536**

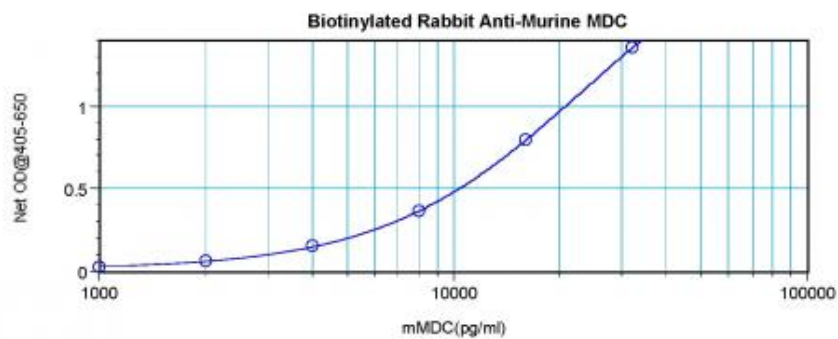
### Ccl22 Rabbit Polyclonal Antibody

#### Product data:

Product Type:	Primary Antibodies
Applications:	ELISA
Recommended Dilution:	WB: 0.1-0.2ug/mL, ELISA: 0.25-2ug/mL
Reactivity:	Murine
Host:	Rabbit
Isotype:	IgG
Clonality:	Polyclonal
Immunogen:	E.coli derived Recombinant Murine MDC (CCL22)
Formulation:	A sterile filtered antibody solution was lyophilized from PBS, pH 7.2.
Purification:	Produced from sera of rabbits pre-immunized with highly pure (>98%) recombinant mMDC. Anti-Murine MDC specific antibody was purified by affinity chromatography and then biotinylated.
Conjugation:	Biotin
Storage:	Store at -20°C as received.
Stability:	Stable for 12 months from date of receipt.
Gene Name:	chemokine (C-C motif) ligand 22
Database Link:	<a href="#">NP_033163</a> <a href="#">Entrez Gene 20299 Mouse</a> <a href="#">O88430</a>
Synonyms:	A-152E5.1; ABCD-1; DC/B-CK; MDC; MDC(1-69); MGC34554; SCYA22; STCP-1



[View online »](#)

**Product images:**

To detect mMDC by direct ELISA (using 100 ul/well antibody solution) a concentration of 0.25-1.0 ug/ml of this antibody is required. This biotinylated polyclonal antibody, in conjunction with compatible secondary reagents, allows the detection of at least 0.2-0.4 ng/well of recombinant mMDC.