

## Product datasheet for **TA328535**

### Ccl12 Rabbit Polyclonal Antibody

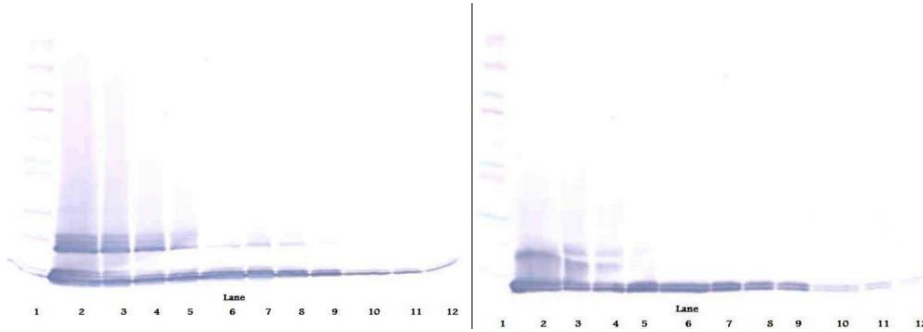
#### Product data:

Product Type:	Primary Antibodies
Applications:	ELISA, WB
Recommended Dilution:	WB: 0.1-0.2ug/mL, ELISA: 0.25-2ug/mL
Reactivity:	Murine
Host:	Rabbit
Isotype:	IgG
Clonality:	Polyclonal
Immunogen:	E.coli derived Recombinant Murine MCP-5 (CCL12)
Formulation:	A sterile filtered antibody solution was lyophilized from PBS, pH 7.2.
Purification:	Produced from sera of rabbits pre-immunized with highly pure (>98%) recombinant mMCP-5. Anti-Murine MCP-5 specific antibody was purified by affinity chromatography employing immobilized mMCP-5 matrix.
Conjugation:	Unconjugated
Storage:	Store at -20°C as received.
Stability:	Stable for 12 months from date of receipt.
Gene Name:	chemokine (C-C motif) ligand 12
Database Link:	<a href="#">NP_035461</a> <a href="#">Entrez Gene 20293 Mouse</a> <a href="#">Q62401</a>
Synonyms:	MCP-5; Scya12
Note:	Neutralization: To yield one-half maximal inhibition [ND50] of the biological activity of mMCP-5 (100.00 ng/ml), a concentration of 2.0-3.0 ≤ug/ml of this antibody is required.

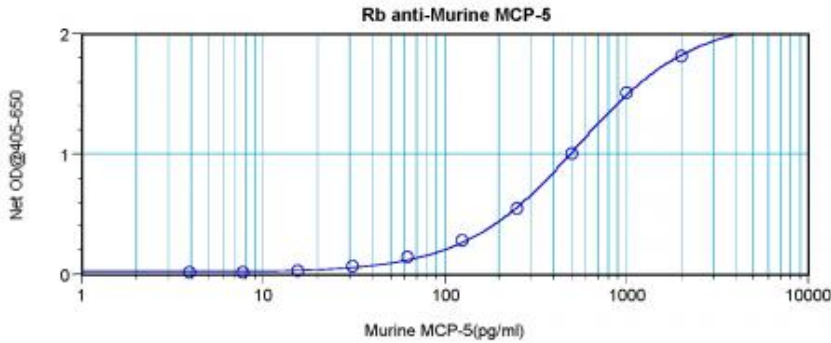


[View online »](#)

Product images:



To detect mMCP-5 by sandwich ELISA (using 100 ul/well antibody solution) a concentration of 0.5 - 2.0 ug/ml of this antibody is required. This antigen affinity purified antibody, in conjunction with Biotinylated Anti-Murine MCP-5 ([TA328534]) as a detection antibody, allows the detection of at least 0.2 - 0.4 ng/well of recombinant mMCP-5.



To detect mMCP-5 by sandwich ELISA (using 100 ul/well antibody solution) a concentration of 0.5 - 2.0 ug/ml of this antibody is required. This antigen affinity purified antibody, in conjunction with Biotinylated Anti-Murine MCP-5 ([TA328534]) as a detection antibody, allows the detection of at least 0.2 - 0.4 ng/well of recombinant mMCP-5.