

## Product datasheet for **TA328531**

### Csf1 Goat Polyclonal Antibody

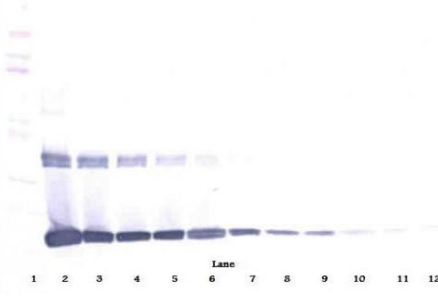
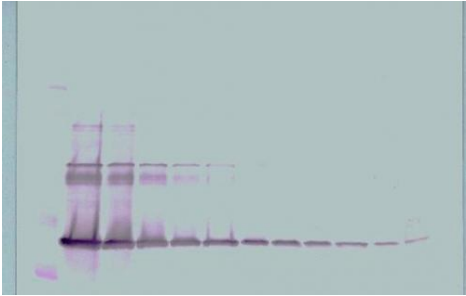
#### Product data:

Product Type:	Primary Antibodies
Applications:	ELISA, WB
Recommended Dilution:	WB: 0.1-0.2ug/mL, ELISA: 0.25-2ug/mL
Reactivity:	Murine
Host:	Goat
Isotype:	IgG
Clonality:	Polyclonal
Immunogen:	E.coli derived Recombinant Murine M-CSF
Formulation:	A sterile filtered antibody solution was lyophilized from PBS, pH 7.2.
Purification:	Produced from sera of goats pre-immunized with highly pure (>98%) recombinant mM-CSF. Anti-Murine M-CSF specific antibody was purified by affinity chromatography employing immobilized mM-CSF matrix.
Conjugation:	Unconjugated
Storage:	Store at -20°C as received.
Stability:	Stable for 12 months from date of receipt.
Gene Name:	colony stimulating factor 1 (macrophage)
Database Link:	<a href="#">NP_031804</a> <a href="#">Entrez Gene 12977 Mouse P07141</a>
Synonyms:	CSF-1; Lanimostim; M-CSF; MCSF; MGC31930; OTTHUMP00000013363; OTTHUMP00000013364
Note:	Neutralization: To yield one-half maximal inhibition [ND50] of the biological activity of mM-CSF (1.5 ng/ml), a concentration of 0.05 - 0.08 <=ug/ml of this antibody is required.

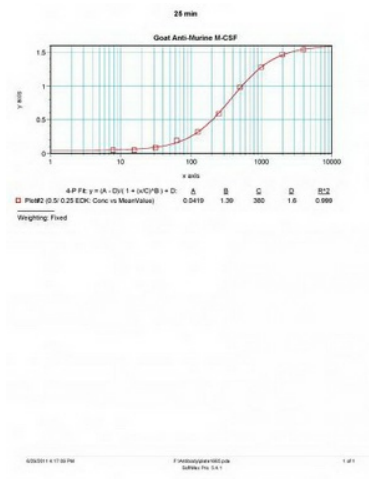


[View online »](#)

Product images:



To detect mM-CSF by sandwich ELISA (using 100 ul/well antibody solution) a concentration of 0.5 - 2.0 ug/ml of this antibody is required. This antigen affinity purified antibody, in conjunction with Biotinylated Anti-Murine M-CSF ([TA328530]) as a detection antibody, allows the detection of at least 0.2 - 0.4 ng/well of recombinant mM-CSF.



To detect mM-CSF by sandwich ELISA (using 100 ul/well antibody solution) a concentration of 0.5 - 2.0 ug/ml of this antibody is required. This antigen affinity purified antibody, in conjunction with Biotinylated Anti-Murine M-CSF ([TA328530]) as a detection antibody, allows the detection of at least 0.2 - 0.4 ng/well of recombinant mM-CSF.