

Product datasheet for **TA328527**

Cxcl1 Rabbit Polyclonal Antibody

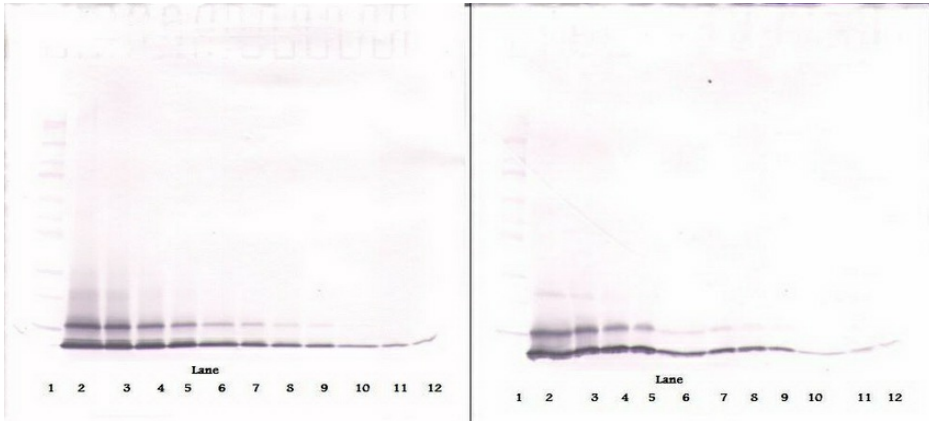
Product data:

Product Type:	Primary Antibodies
Applications:	ELISA, WB
Recommended Dilution:	WB: 0.1-0.2ug/mL, ELISA: 0.25-2ug/mL
Reactivity:	Murine
Host:	Rabbit
Isotype:	IgG
Clonality:	Polyclonal
Immunogen:	E.coli derived Recombinant Murine KC (CXCL1)
Formulation:	A sterile filtered antibody solution was lyophilized from PBS, pH 7.2.
Purification:	Produced from sera of rabbits pre-immunized with highly pure (>98%) recombinant mKC. Anti-Murine KC specific antibody was purified by affinity chromatography employing immobilized mKC matrix.
Conjugation:	Unconjugated
Storage:	Store at -20°C as received.
Stability:	Stable for 12 months from date of receipt.
Gene Name:	chemokine (C-X-C motif) ligand 1
Database Link:	NP_032202 Entrez Gene 14825 Mouse P12850
Synonyms:	FSP; GRO; GRO-alpha(1-73); GRO1; GROa; MGSA; MGSA-a; NAP-3; SCYB1

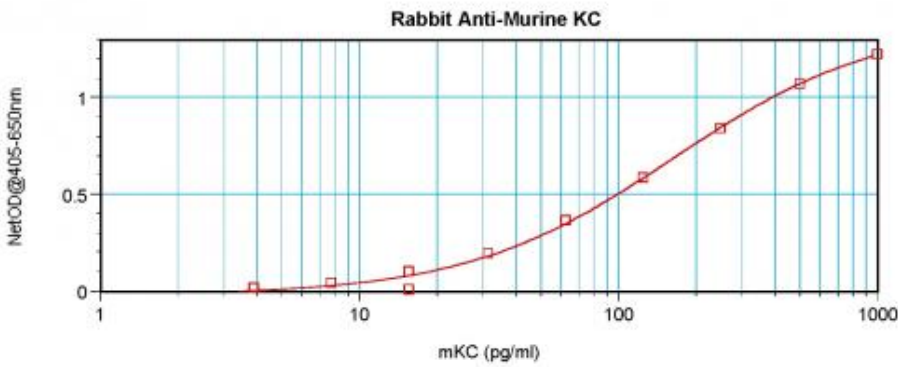


[View online »](#)

Product images:



To detect mKC by sandwich ELISA (using 100 ul/well antibody solution) a concentration of 0.5 - 2.0 ug/ml of this antibody is required. This antigen affinity purified antibody, in conjunction with Biotinylated Anti-Murine KC ([TA328526]) as a detection antibody, allows the detection of at least 0.2 - 0.4 ng/well of recombinant mKC.



To detect mKC by sandwich ELISA (using 100 ul/well antibody solution) a concentration of 0.5 - 2.0 ug/ml of this antibody is required. This antigen affinity purified antibody, in conjunction with Biotinylated Anti-Murine KC ([TA328526]) as a detection antibody, allows the detection of at least 0.2 - 0.4 ng/well of recombinant mKC.