

Product datasheet for **TA328521**

Igf1 Goat Polyclonal Antibody

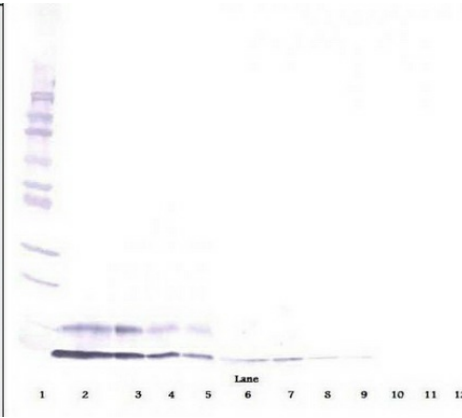
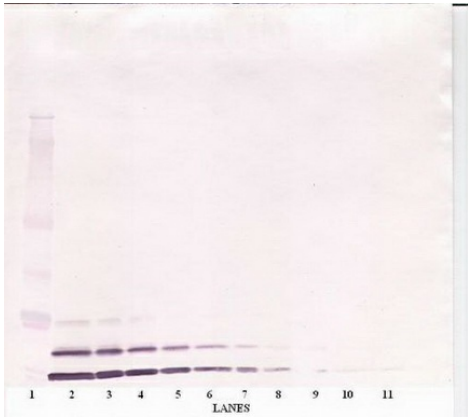
Product data:

Product Type:	Primary Antibodies
Applications:	ELISA, WB
Recommended Dilution:	WB: 0.1-0.2ug/mL, ELISA: 0.25-2ug/mL
Reactivity:	Murine
Host:	Goat
Isotype:	IgG
Clonality:	Polyclonal
Immunogen:	E.coli derived Recombinant Murine IGF-I
Formulation:	A sterile filtered antibody solution was lyophilized from PBS, pH 7.2.
Purification:	Produced from sera of goats pre-immunized with highly pure (>98%) recombinant mIGF-I. Anti-Murine IGF-I specific antibody was purified by affinity chromatography employing immobilized mIGF-I matrix.
Conjugation:	Unconjugated
Storage:	Store at -20°C as received.
Stability:	Stable for 12 months from date of receipt.
Gene Name:	insulin-like growth factor 1
Database Link:	NP_034642 Entrez Gene 16000 Mouse P05017
Synonyms:	IBP1; IGF-1; IGF-IA; IGF-IB; IGF1A; IGFI; MGF; OTTHUMP00000195084; Somatomedin-C
Note:	Neutralization: To yield one-half maximal inhibition [ND50] of the biological activity of Murine IGF-I (200 ng/ml), a concentration of 12.0 ? 14.0 ug/ml of this antibody is required.

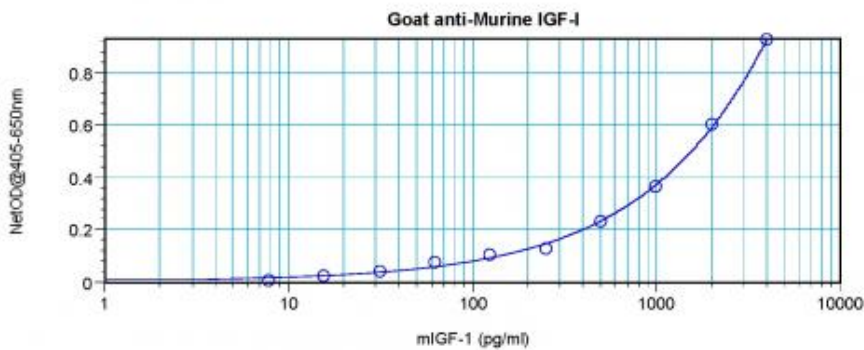


[View online »](#)

Product images:



To detect mIGF-I by sandwich ELISA (using 100 ul/well antibody solution) a concentration of 0.5 - 2.0 ug/ml of this antibody is required. This antigen affinity purified antibody, in conjunction with Biotinylated Anti-Murine IGF-I ([TA328520]) as a detection antibody, allows the detection of at least 0.2 - 0.4 ng/well of recombinant mIGF-I.



To detect mIGF-I by sandwich ELISA (using 100 ul/well antibody solution) a concentration of 0.5 - 2.0 ug/ml of this antibody is required. This antigen affinity purified antibody, in conjunction with Biotinylated Anti-Murine IGF-I ([TA328520]) as a detection antibody, allows the detection of at least 0.2 - 0.4 ng/well of recombinant mIGF-I.