

Product datasheet for **TA328520**

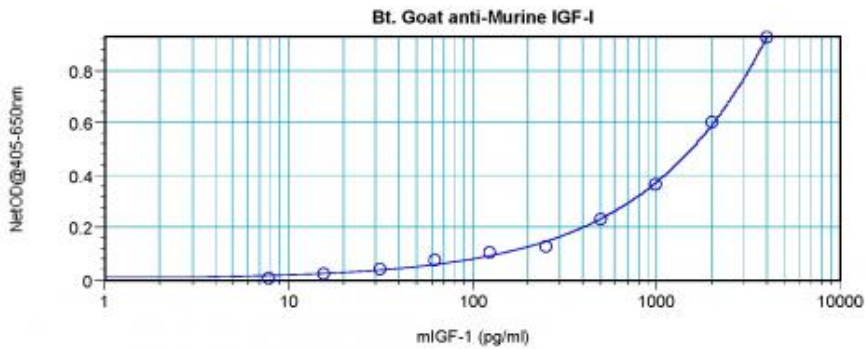
Igf1 Rabbit Polyclonal Antibody

Product data:

Product Type:	Primary Antibodies
Applications:	ELISA
Recommended Dilution:	WB: 0.1-0.2ug/mL, ELISA: 0.25-2ug/mL
Reactivity:	Murine
Host:	Rabbit
Isotype:	IgG
Clonality:	Polyclonal
Immunogen:	E.coli derived Recombinant Murine IGF-I
Formulation:	A sterile filtered antibody solution was lyophilized from PBS, pH 7.2.
Purification:	Produced from sera of rabbits pre-immunized with highly pure (>98%) recombinant mIGF-I. Anti-Murine IGF-I specific antibody was purified by affinity chromatography and then biotinylated.
Conjugation:	Biotin
Storage:	Store at -20°C as received.
Stability:	Stable for 12 months from date of receipt.
Gene Name:	insulin-like growth factor 1
Database Link:	NP_034642 Entrez Gene 16000 Mouse P05017
Synonyms:	IBP1; IGF-1; IGF-IA; IGF-IB; IGF1A; IGFI; MGF; OTTHUMP00000195084; Somatomedin-C



[View online »](#)

Product images:

To detect mIGF-I by sandwich ELISA (using 100 ul/well antibody solution) a concentration of 0.25-1.0 ug/ml of this antibody is required. This biotinylated polyclonal antibody, in conjunction with Polyclonal Anti-Murine IGF-I ([TA328521]) as a capture antibody, allows the detection of at least 0.2-0.4 ng/well of recombinant mIGF-I.