

## Product datasheet for **TA328519**

### Ifng Rabbit Polyclonal Antibody

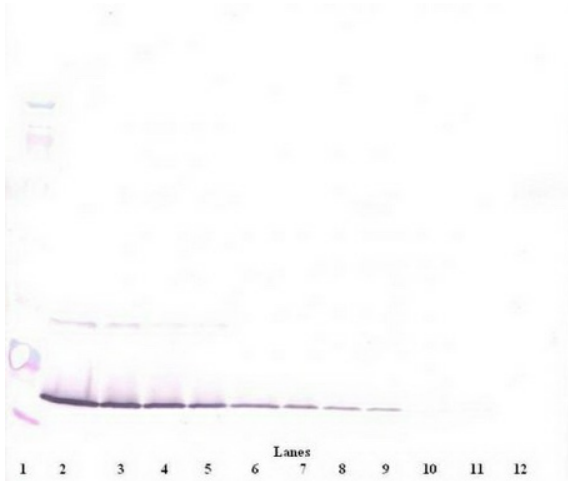
#### Product data:

Product Type:	Primary Antibodies
Applications:	ELISA, WB
Recommended Dilution:	WB: 0.1-0.2ug/mL, ELISA: 0.25-2ug/mL
Reactivity:	Murine
Host:	Rabbit
Isotype:	IgG
Clonality:	Polyclonal
Immunogen:	E.coli derived Recombinant Murine IFN- $\gamma$
Formulation:	A sterile filtered antibody solution was lyophilized from PBS, pH 7.2.
Purification:	Produced from sera of rabbits pre-immunized with highly pure recombinant Murine IFN-gamma. Anti-Murine IFN-gamma specific antibody was purified by affinity chromatography employing immobilized Murine IFN-gamma matrix.
Conjugation:	Unconjugated
Storage:	Store at -20°C as received.
Stability:	Stable for 12 months from date of receipt.
Gene Name:	interferon gamma
Database Link:	<a href="#">NP_032363</a> <a href="#">Entrez Gene 15978 Mouse</a> <a href="#">P01580</a>
Synonyms:	IFG; IFI; IFN-gamma
Note:	Neutralization: To yield one-half maximal inhibition [ND50] of the biological activity of Murine IFN-gamma (1.0 ng/ml), a concentration of 0.05-0.10 ng/ml of this antibody is required.

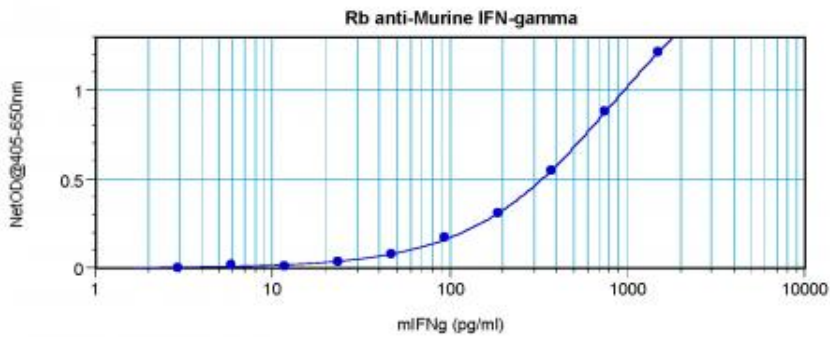


[View online »](#)

**Product images:**



To detect Murine IFN-gamma; by sandwich ELISA (using 100 ul/well antibody solution) a concentration of 0.5 - 2.0 ug/ml of this antibody is required. This antigen affinity purified antibody, in conjunction with Biotinylated Anti-Murine IFN-gamma; ([TA328518]) as a detection antibody, allows the detection of at least 0.2 - 0.4 ng/well of recombinant Murine IFN-gamma;



To detect Murine IFN-gamma; by sandwich ELISA (using 100 ul/well antibody solution) a concentration of 0.5 - 2.0 ug/ml of this antibody is required. This antigen affinity purified antibody, in conjunction with Biotinylated Anti-Murine IFN-gamma; ([TA328518]) as a detection antibody, allows the detection of at least 0.2 - 0.4 ng/well of recombinant Murine IFN-gamma;