

## Product datasheet for **TA328517**

### Csf2 Rabbit Polyclonal Antibody

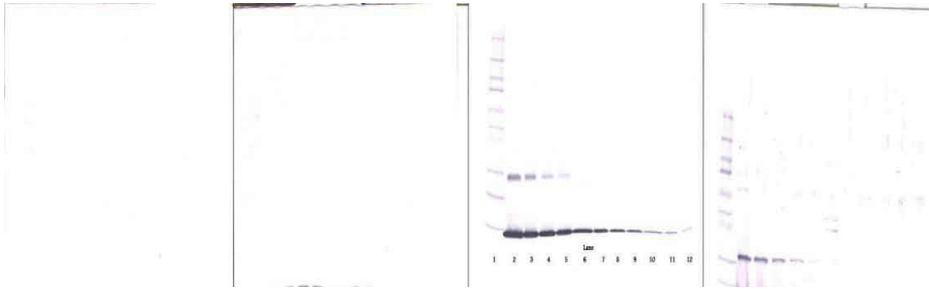
#### Product data:

Product Type:	Primary Antibodies
Applications:	ELISA, WB
Recommended Dilution:	WB: 0.1-0.2ug/mL, ELISA: 0.25-2ug/mL
Reactivity:	Murine
Host:	Rabbit
Isotype:	IgG
Clonality:	Polyclonal
Immunogen:	E.coli derived Recombinant Murine GM-CSF
Formulation:	A sterile filtered antibody solution was lyophilized from PBS, pH 7.2.
Purification:	Produced from sera of rabbits pre-immunized with highly pure (>98%) recombinant mGM-CSF. Anti-Murine GM-CSF specific antibody was purified by affinity chromatography employing immobilized mGM-CSF matrix.
Conjugation:	Unconjugated
Storage:	Store at -20°C as received.
Stability:	Stable for 12 months from date of receipt.
Gene Name:	colony stimulating factor 2 (granulocyte-macrophage)
Database Link:	<a href="#">NP_034099</a> <a href="#">Entrez Gene 12981 Mouse</a> <a href="#">P01587</a>
Synonyms:	CSF; GM-CSF; GMCSF; MGC131935; MGC138897; molgramostin; sargramostim
Note:	Neutralization: To yield one-half maximal inhibition [ND50] of the biological activity of mGM-CSF (0.60 ng/ml), a concentration of 0.012-0.020 <=ug/ml of this antibody is required.

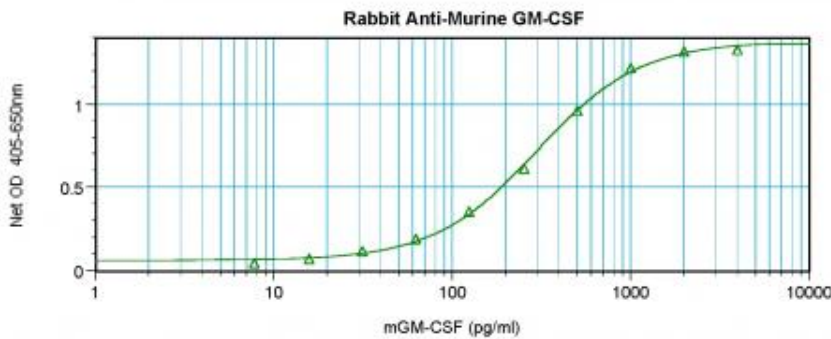


[View online »](#)

**Product images:**



To detect mGM-CSF by sandwich ELISA (using 100 ul/well antibody solution) a concentration of 0.5 - 2.0 ug/ml of this antibody is required. This antigen affinity purified antibody, in conjunction with Biotinylated Anti-Murine GM-CSF ([TA328516]) as a detection antibody, allows the detection of at least 0.2 - 0.4 ng/well of recombinant mGM-CSF.



To detect mGM-CSF by sandwich ELISA (using 100 ul/well antibody solution) a concentration of 0.5 - 2.0 ug/ml of this antibody is required. This antigen affinity purified antibody, in conjunction with Biotinylated Anti-Murine GM-CSF ([TA328516]) as a detection antibody, allows the detection of at least 0.2 - 0.4 ng/well of recombinant mGM-CSF.