

Product datasheet for **TA328507**

IL22 Rabbit Polyclonal Antibody

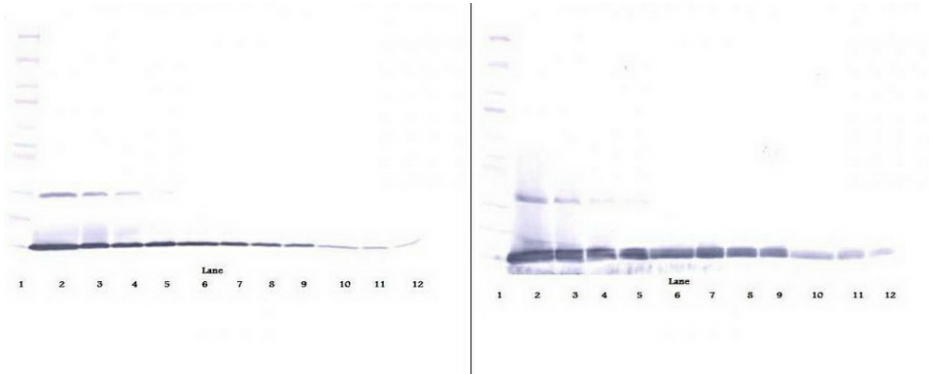
Product data:

Product Type:	Primary Antibodies
Applications:	ELISA, WB
Recommended Dilution:	WB: 0.1-0.2ug/mL, ELISA: 0.25-2ug/mL
Reactivity:	Murine
Host:	Rabbit
Isotype:	IgG
Clonality:	Polyclonal
Immunogen:	E.coli derived Recombinant Murine IL-22
Formulation:	A sterile filtered antibody solution was lyophilized from PBS, pH 7.2.
Purification:	Produced from sera of rabbits pre-immunized with highly pure (>98%) recombinant mIL-22. Anti-Murine IL-22 specific antibody was purified by affinity chromatography employing immobilized mIL-22 matrix.
Conjugation:	Unconjugated
Storage:	Store at -20°C as received.
Stability:	Stable for 12 months from date of receipt.
Gene Name:	interleukin 22
Database Link:	NP_058667 Entrez Gene 50929 Mouse Q9J1Y9
Synonyms:	IL-21; IL-22; IL-D110; IL-TIF; IL21; ILTIF; MGC79382; MGC79384; TIFa; TIFIL-23; zcyto18
Note:	Neutralization: To yield one-half maximal inhibition [ND50] of the biological activity of Murine IL-22 (50.0 ng/ml), a concentration of 2.0 ug/ml of this antibody is required.

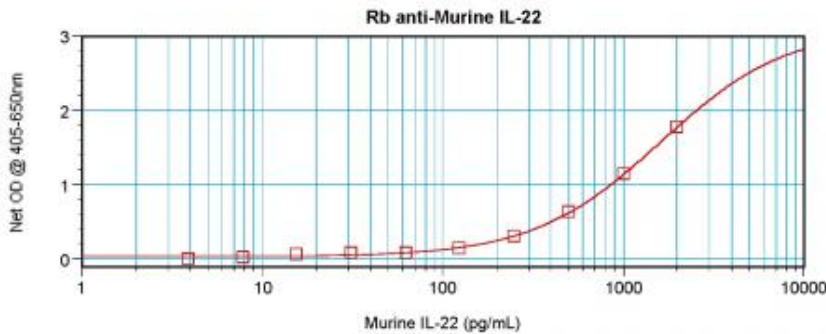


[View online »](#)

Product images:



To detect mIL-22 by sandwich ELISA (using 100 ul/well antibody solution) a concentration of 0.5 - 2.0 ug/ml of this antibody is required. This antigen affinity purified antibody, in conjunction with Biotinylated Anti-Murine IL-22 ([TA328506]) as a detection antibody, allows the detection of at least 0.2 - 0.4 ng/well of recombinant mIL-22.



To detect mIL-22 by sandwich ELISA (using 100 ul/well antibody solution) a concentration of 0.5 - 2.0 ug/ml of this antibody is required. This antigen affinity purified antibody, in conjunction with Biotinylated Anti-Murine IL-22 ([TA328506]) as a detection antibody, allows the detection of at least 0.2 - 0.4 ng/well of recombinant mIL-22.