

## Product datasheet for **TA328504**

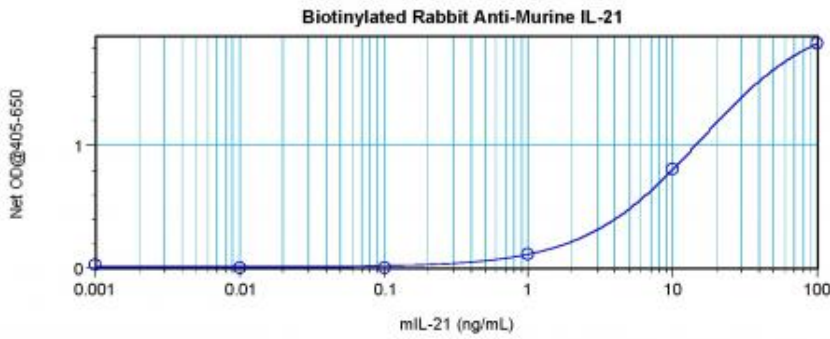
### IL21 Rabbit Polyclonal Antibody

#### Product data:

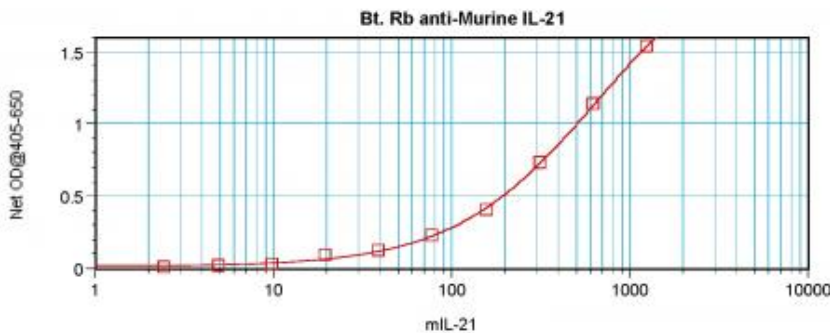
|                       |   |
|-----------------------|---|
| Product Type:         | Primary Antibodies  |
| Applications:         | ELISA   |
| Recommended Dilution: | WB: 0.1-0.2ug/mL, ELISA: 0.25-2ug/mL  |
| Reactivity:           | Murine  |
| Host:                 | Rabbit  |
| Isotype:              | IgG   |
| Clonality:            | Polyclonal  |
| Immunogen:            | E.coli derived Recombinant Murine IL-21   |
| Formulation:          | A sterile filtered antibody solution was lyophilized from PBS, pH 7.2.  |
| Purification:         | Produced from sera of rabbits pre-immunized with highly pure (>98%) recombinant mL-21 (Murine Interleukin-21). Anti-Murine IL-21 specific antibody was purified by affinity chromatography and then biotinylated. |
| Conjugation:          | Biotin  |
| Storage:              | Store at -20°C as received.   |
| Stability:            | Stable for 12 months from date of receipt.  |
| Gene Name:            | interleukin 21  |
| Database Link:        | <a href="#">NP_068554</a><br><a href="#">Entrez Gene 60505 Mouse</a><br><a href="#">Q9ES17</a>  |
| Synonyms:             | IL-21; Za11   |



[View online »](#)

**Product images:**


To detect mIL-21 by direct ELISA (using 100 ul/well antibody solution) a concentration of 0.25-1.0 ug/ml of this antibody is required. This biotinylated polyclonal antibody, in conjunction with compatible secondary reagents, allows the detection of at least 0.2-0.4 ng/well of recombinant mIL-21.



To detect mIL-21 by sandwich ELISA (using 100 ul/well antibody solution) a concentration of 0.25-1.0 ug/ml of this antibody is required. This biotinylated polyclonal antibody, in conjunction with Polyclonal Anti-Murine IL-21 ([TA328505]) as a capture antibody, allows the detection of at least 0.2-0.4 ng/well of recombinant mIL-21.