

## Product datasheet for **TA328501**

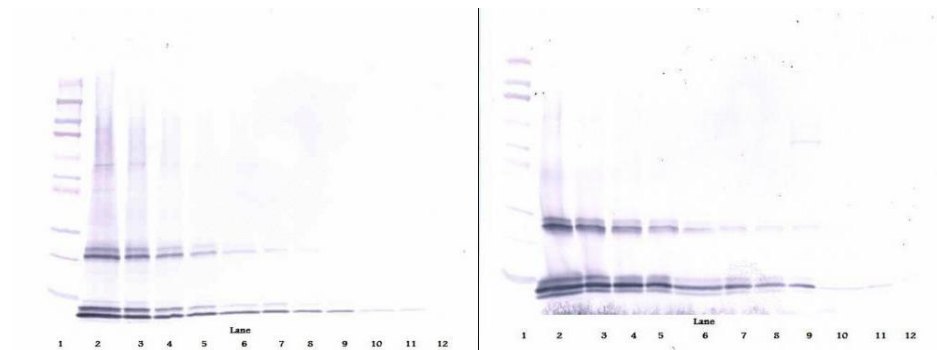
### IL15 Rabbit Polyclonal Antibody

#### Product data:

Product Type:	Primary Antibodies
Applications:	WB
Recommended Dilution:	WB: 0.1-0.2ug/mL, ELISA: 0.25-2ug/mL
Reactivity:	Murine
Host:	Rabbit
Isotype:	IgG
Clonality:	Polyclonal
Immunogen:	E.coli derived Recombinant Murine IL-15
Formulation:	A sterile filtered antibody solution was lyophilized from PBS, pH 7.2.
Purification:	Produced from sera of rabbits pre-immunized with highly pure (>98%) recombinant mL-15. Anti-Murine IL-15 specific antibody was purified by affinity chromatography employing immobilized mL-15 matrix.
Conjugation:	Unconjugated
Storage:	Store at -20°C as received.
Stability:	Stable for 12 months from date of receipt.
Gene Name:	interleukin 15
Database Link:	<a href="#">NP_032383</a> <a href="#">Entrez Gene 16168 Mouse</a> <a href="#">P48346</a>
Synonyms:	IL-15; MGC9721
Note:	Neutralization: To yield one-half maximal inhibition [ND50] of the biological activity of mL-15 (5.0 ng/ml), a concentration of 0.4 - 0.5 <=ug/ml of this antibody is required.



[View online »](#)

**Product images:**

To detect mIL-15 by Western Blot analysis this antibody can be used at a concentration of 0.1 - 0.2 ug/ml. Used in conjunction with compatible secondary reagents the detection limit for recombinant mIL-15 is 1.5 - 3.0 ng/lane, under either reducing or non-reducing conditions.