

Product datasheet for **TA328489**

IL6 Rabbit Polyclonal Antibody

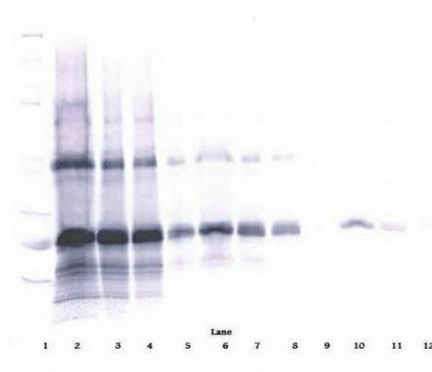
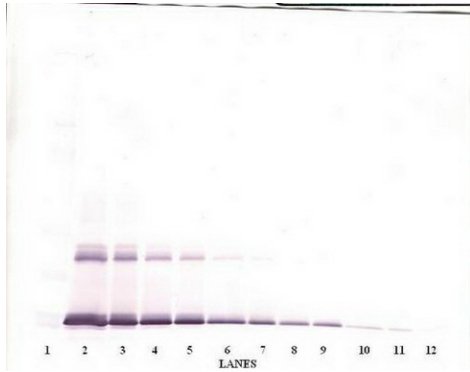
Product data:

| | |
|-----------------------|--|
| Product Type: | Primary Antibodies |
| Applications: | ELISA, WB |
| Recommended Dilution: | WB: 0.1-0.2ug/mL, ELISA: 0.25-2ug/mL, IHC: 0.25ug/mL - 1mg/mL |
| Reactivity: | Murine |
| Host: | Rabbit |
| Isotype: | IgG |
| Clonality: | Polyclonal |
| Immunogen: | E.coli derived Recombinant Murine IL-6 |
| Formulation: | A sterile filtered antibody solution was lyophilized from PBS, pH 7.2. |
| Purification: | Produced from sera of rabbits pre-immunized with highly pure recombinant Murine IL-6. Anti-Murine IL-6 specific antibody was purified by affinity chromatography employing immobilized Murine IL-6 matrix. |
| Conjugation: | Unconjugated |
| Storage: | Store at -20°C as received. |
| Stability: | Stable for 12 months from date of receipt. |
| Gene Name: | interleukin 6 |
| Database Link: | NP_112445 Entrez Gene 16193 Mouse P08505 |
| Synonyms: | BSF-2; BSF2; CDF; HGF; HSF; IFNB2; IL-6; OTTHUMP00000158544 |
| Note: | Neutralization: To yield one-half maximal inhibition [ND50] of the biological activity of Murine IL-6 (3 pg/ml), a concentration of 0.24-0.36 <=ug/ml of this antibody is required |

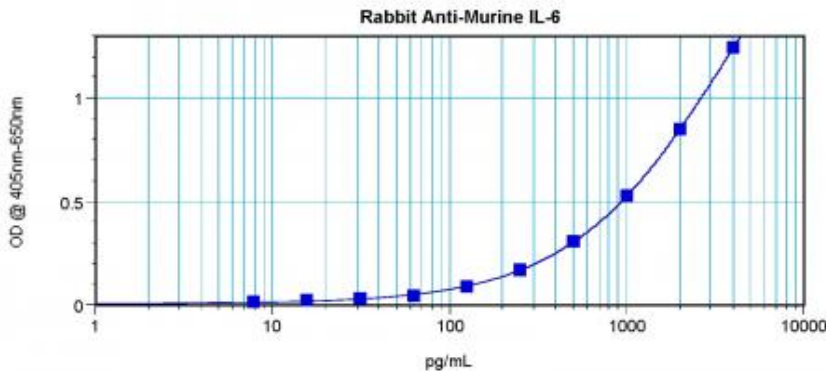


[View online »](#)

Product images:



To detect Murine IL-6 by sandwich ELISA (using 100ul/well antibody solution) a concentration of 0.5 - 2.0 ug/ml of this antibody is required. This antigen affinity purified antibody, in conjunction with Biotinylated Anti-Murine IL-6 ([TA328488]) as a detection antibody, allows the detection of at least 0.2 - 0.4 ng/well of recombinant Murine IL-6.



To detect Murine IL-6 by sandwich ELISA (using 100ul/well antibody solution) a concentration of 0.5 - 2.0 ug/ml of this antibody is required. This antigen affinity purified antibody, in conjunction with Biotinylated Anti-Murine IL-6 ([TA328488]) as a detection antibody, allows the detection of at least 0.2 - 0.4 ng/well of recombinant Murine IL-6.