

Product datasheet for **TA328479**

IL1b Rabbit Polyclonal Antibody

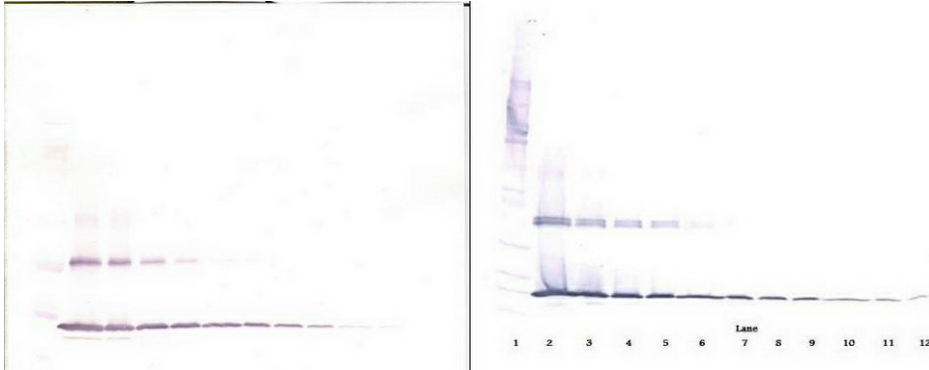
Product data:

Product Type:	Primary Antibodies
Applications:	ELISA, WB
Recommended Dilution:	WB: 0.1-0.2ug/mL, ELISA: 0.25-2ug/mL, IHC: 0.25ug/mL - 1mg/mL
Reactivity:	Murine
Host:	Rabbit
Isotype:	IgG
Clonality:	Polyclonal
Immunogen:	E.coli derived Recombinant Murine IL-1 β
Formulation:	A sterile filtered antibody solution was lyophilized from PBS, pH 7.2.
Purification:	Produced from sera of rabbits pre-immunized with highly pure (>98%) recombinant mL-1beta. Anti-Murine IL-1beta specific antibody was purified by affinity chromatography employing immobilized mL-1beta matrix.
Conjugation:	Unconjugated
Storage:	Store at -20°C as received.
Stability:	Stable for 12 months from date of receipt.
Gene Name:	interleukin 1 beta
Database Link:	NP_032387 Entrez Gene 16176 Mouse P10749
Synonyms:	catabolin; IL-1; IL-1B; IL1-BETA; IL1F2; pro-interleukin-1-beta
Note:	Neutralization: To yield one-half maximal inhibition [ND50] of the biological activity of mL-1beta (10 pg/ml), a concentration of 0.57-0.86 \leq ug/ml of this antibody is required.

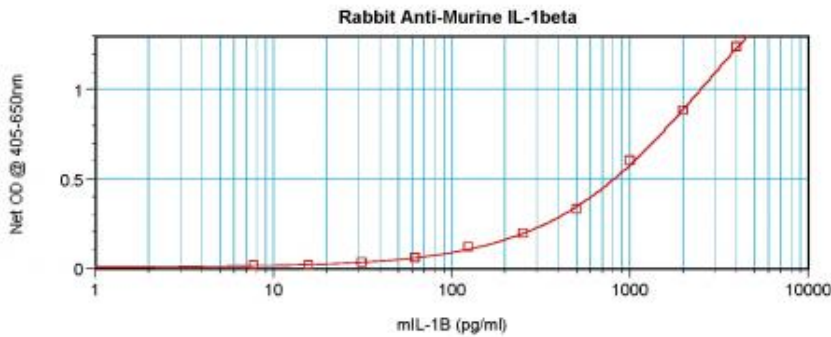


[View online »](#)

Product images:



To detect mL-1beta by sandwich ELISA (using 100 ul/well antibody solution) a concentration of 0.5 - 2.0 ug/ml of this antibody is required. This antigen affinity purified antibody, in conjunction with Biotinylated Anti-Murine IL-1beta ([TA328478]) as a detection antibody, allows the detection of at least 0.2 - 0.4 ng/well of recombinant mL-1beta.



To detect mL-1beta by sandwich ELISA (using 100 ul/well antibody solution) a concentration of 0.5 - 2.0 ug/ml of this antibody is required. This antigen affinity purified antibody, in conjunction with Biotinylated Anti-Murine IL-1beta ([TA328478]) as a detection antibody, allows the detection of at least 0.2 - 0.4 ng/well of recombinant mL-1beta.