

## Product datasheet for **TA328471**

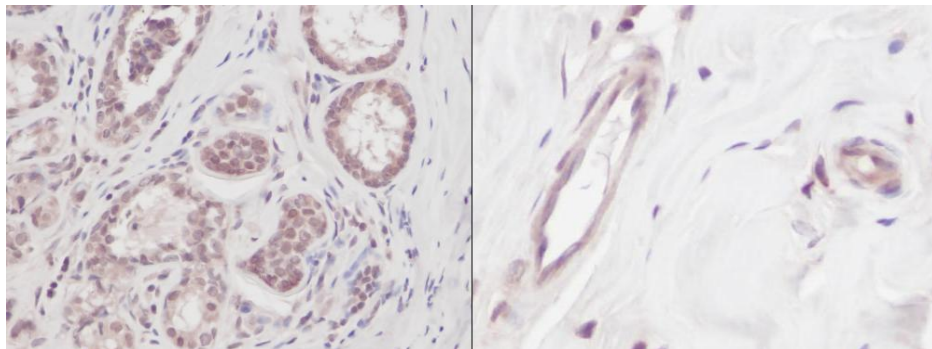
### VEGFA Rabbit Polyclonal Antibody

#### Product data:

Product Type:	Primary Antibodies
Applications:	IHC
Recommended Dilution:	WB: 0.1-0.2ug/mL, ELISA: 0.25-2ug/mL, IHC: 2.5-5.5mg/mL
Reactivity:	Human
Host:	Rabbit
Isotype:	IgG
Clonality:	Polyclonal
Immunogen:	E.coli derived Recombinant Human VEGF
Formulation:	A sterile filtered antibody solution was lyophilized from PBS, pH 7.2.
Purification:	Produced from sera of rabbits pre-immunized with highly pure (>98%) recombinant hVEGF (human VEGF). Anti-Human VEGF specific antibody was purified by affinity chromatography employing immobilized hVEGF matrix.
Conjugation:	Unconjugated
Storage:	Store at -20°C as received.
Stability:	Stable for 12 months from date of receipt.
Gene Name:	vascular endothelial growth factor A
Database Link:	<a href="#">NP_001028928</a> <a href="#">Entrez Gene 7422 Human</a> <a href="#">P15692</a>
Synonyms:	MVCD1; VEGF; VPF
Note:	Neutralization: To yield one-half maximal inhibition [ND50] of the biological activity of hVEGF (10 ng/ml), a concentration of 0.05 - 0.1 <=ug/ml of this antibody is required.
Protein Families:	Druggable Genome, Secreted Protein
Protein Pathways:	Bladder cancer, Cytokine-cytokine receptor interaction, Focal adhesion, mTOR signaling pathway, Pancreatic cancer, Pathways in cancer, Renal cell carcinoma, VEGF signaling pathway



[View online »](#)

**Product images:**

This antibody stained formalin-fixed, paraffin-embedded sections of Human breast invasive ductal carcinoma. The recommended concentrations are 2.5 - 5.5 mg/ml with an overnight incubation at 4C. An HRP-labeled polymer detection system was used with a DAB chromogen. Heat induced antigen retrieval with a pH 6.0 Sodium Citrate buffer is recommended. Optimal concentrations and conditions may vary.