

Product datasheet for **TA328469**

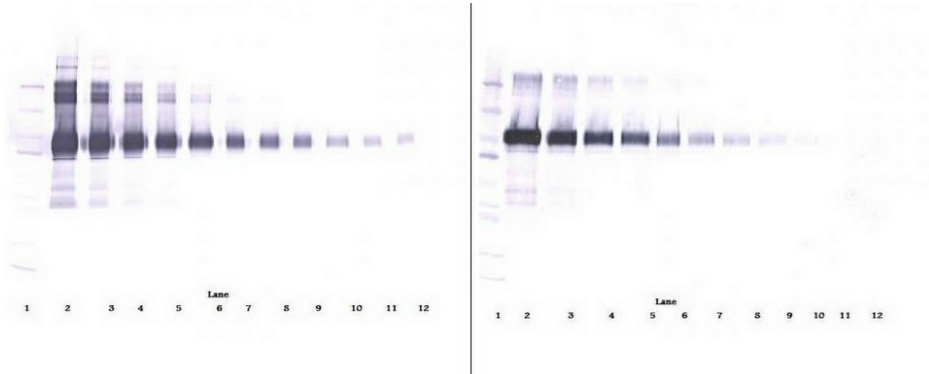
VCAM1 Rabbit Polyclonal Antibody

Product data:

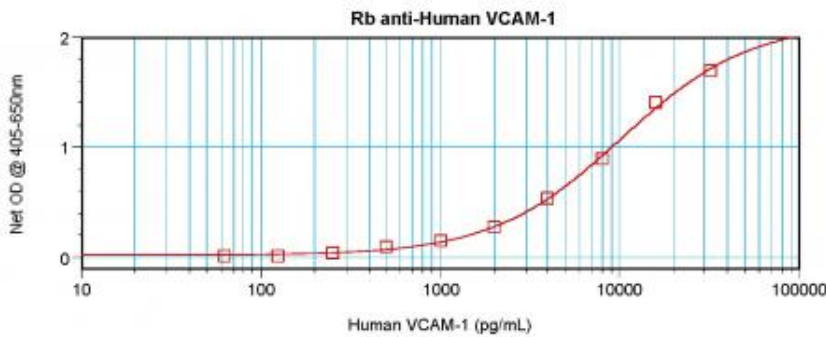
Product Type:	Primary Antibodies
Applications:	ELISA, WB
Recommended Dilution:	WB: 0.1-0.2ug/mL, ELISA: 0.25-2ug/mL
Reactivity:	Human
Host:	Rabbit
Isotype:	IgG
Clonality:	Polyclonal
Immunogen:	HEK293 cells derived Recombinant Human VCAM-1
Formulation:	A sterile filtered antibody solution was lyophilized from PBS, pH 7.2.
Purification:	Produced from sera of rabbits immunized with highly pure recombinant Human VCAM-1. Anti-Human VCAM-1 specific antibody was purified by affinity chromatography employing an immobilized Human VCAM-1 matrix.
Conjugation:	Unconjugated
Storage:	Store at -20°C as received.
Stability:	Stable for 12 months from date of receipt.
Gene Name:	vascular cell adhesion molecule 1
Database Link:	NP_001069 Entrez Gene 7412 Human P19320
Synonyms:	CD106; INCAM-100
Protein Families:	Druggable Genome, ES Cell Differentiation/IPS, Transmembrane
Protein Pathways:	Cell adhesion molecules (CAMs), Leukocyte transendothelial migration



[View online »](#)

Product images:


To detect hVCAM-1 by sandwich ELISA (using 100ul/well antibody solution) a concentration of 0.5 - 2.0 ug/ml of this antibody is required. This antigen affinity purified antibody, in conjunction with Biotinylated Anti-Human VCAM-1 ([TA328468]) as a detection antibody, allows the detection of at least 0.2 - 0.4 ng/well of recombinant hVCAM-1.



To detect hVCAM-1 by sandwich ELISA (using 100ul/well antibody solution) a concentration of 0.5 - 2.0 ug/ml of this antibody is required. This antigen affinity purified antibody, in conjunction with Biotinylated Anti-Human VCAM-1 ([TA328468]) as a detection antibody, allows the detection of at least 0.2 - 0.4 ng/well of recombinant hVCAM-1.