

Product datasheet for **TA328456**

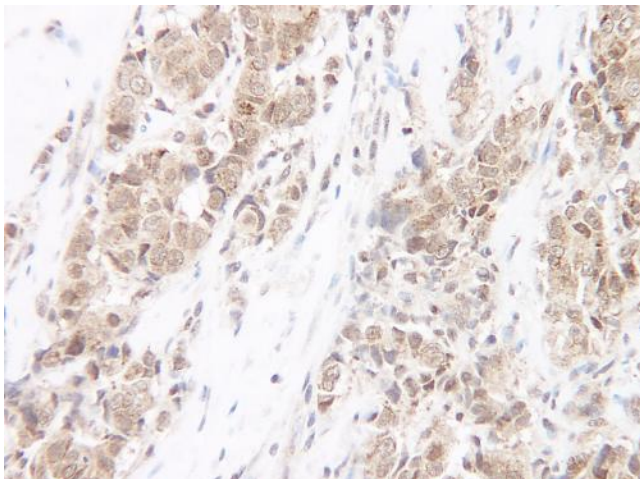
LTA Rabbit Polyclonal Antibody

Product data:

Product Type:	Primary Antibodies
Applications:	IHC
Recommended Dilution:	WB: 0.1-0.2ug/mL, ELISA: 0.25-2ug/mL, IHC: 0.25ug/mL - 1mg/mL
Reactivity:	Human
Host:	Rabbit
Isotype:	IgG
Clonality:	Polyclonal
Immunogen:	E.coli derived Recombinant Human TNF- β (E.coli-derived)
Formulation:	A sterile filtered antibody solution was lyophilized from PBS, pH 7.2.
Purification:	Produced from sera of rabbits pre-immunized with highly pure recombinant Human TNF-beta. Anti-Human TNF-beta specific antibody was purified by affinity chromatography employing immobilized Human TNF-beta matrix.
Conjugation:	Unconjugated
Storage:	Store at -20°C as received.
Stability:	Stable for 12 months from date of receipt.
Gene Name:	lymphotoxin alpha
Database Link:	NP_000586 Entrez Gene 4049 Human P01374
Synonyms:	LT; TNFB; TNFSF1
Note:	Neutralization: To yield one-half maximal inhibition [ND50] of the biological activity of Human TNF-beta (0.5 ng/ml), a concentration of < 0.1 ug/ml of this antibody is required.
Protein Families:	Druggable Genome, Secreted Protein, Transmembrane
Protein Pathways:	Antigen processing and presentation, Cytokine-cytokine receptor interaction, Type I diabetes mellitus



[View online »](#)

Product images:

IHC of human breast malignant carcinoma. The recommended concentration is 0.50 ug/mL with an overnight incubation at 4.C. An HRP-labeled polymer detection system was used with a DAB chromogen. Heat induced antigen retrieval with a pH 6.0 sodium citrate buffer is recommended. Optimal concentrations and conditions may vary. Tissue samples were provided by the Cooperative Human Tissue Network, which is funded by the National Cancer Institute.