

## Product datasheet for **TA328455**

### TNF alpha (TNF) Rabbit Polyclonal Antibody

#### Product data:

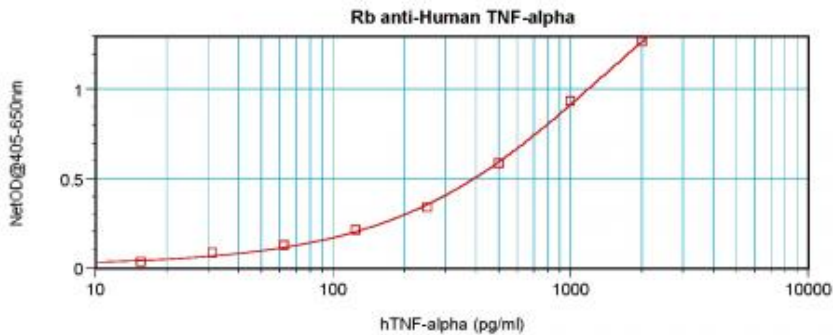
Product Type:	Primary Antibodies
Applications:	ELISA, IHC
Recommended Dilution:	WB: 0.1-0.2ug/mL, ELISA: 0.25-2ug/mL, IHC: 0.25ug/mL - 1mg/mL
Reactivity:	Human
Host:	Rabbit
Isotype:	IgG
Clonality:	Polyclonal
Immunogen:	E.coli derived Recombinant Human TNF- $\alpha$
Formulation:	A sterile filtered antibody solution was lyophilized from PBS, pH 7.2.
Purification:	Produced from sera of rabbits pre-immunized with highly pure recombinant Human TNF-alpha. Anti-Human TNF-alpha specific antibody was purified by affinity chromatography employing immobilized Human TNF-alpha matrix.
Conjugation:	Unconjugated
Storage:	Store at -20°C as received.
Stability:	Stable for 12 months from date of receipt.
Gene Name:	tumor necrosis factor
Database Link:	<a href="#">NP_000585</a> <a href="#">Entrez Gene 7124 Human</a> <a href="#">P01375</a>
Synonyms:	DIF; TNF-alpha; TNFA; TNFSF2
Note:	Neutralization: To yield one-half maximal inhibition [ND50] of the biological activity of Human TNF-alpha (0.5 ng/ml), a concentration of 0.08- 0.10 $\leq$ ug/ml of this antibody is required.
Protein Families:	Druggable Genome, Secreted Protein, Transcription Factors, Transmembrane



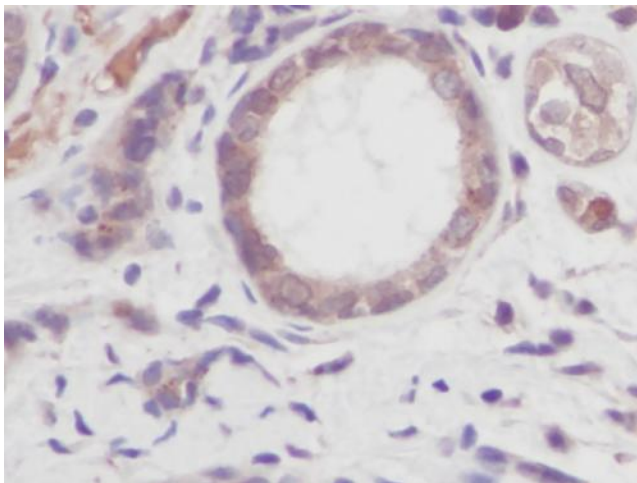
[View online »](#)

**Protein Pathways:**

Adipocytokine signaling pathway, Allograft rejection, Alzheimer's disease, Amyotrophic lateral sclerosis (ALS), Apoptosis, Asthma, Cytokine-cytokine receptor interaction, Dilated cardiomyopathy, Fc epsilon RI signaling pathway, Graft-versus-host disease, Hematopoietic cell lineage, Hypertrophic cardiomyopathy (HCM), MAPK signaling pathway, Natural killer cell mediated cytotoxicity, NOD-like receptor signaling pathway, RIG-I-like receptor signaling pathway, Systemic lupus erythematosus, T cell receptor signaling pathway, TGF-beta signaling pathway, Toll-like receptor signaling pathway, Type I diabetes mellitus, Type II diabetes mellitus

**Product images:**

To detect Human TNF-alpha; by sandwich ELISA (using 100 ul/well antibody solution) a concentration of 0.5 - 2.0 ug/ml of this antibody is required. This antigen affinity purified antibody, in conjunction with Biotinylated Anti-Human TNF-alpha; ([TA328452]) as a detection antibody, allows the detection of at least 0.2 - 0.4 ng/well of recombinant Human TNF-alpha;



To detect Human TNF-alpha; by sandwich ELISA (using 100 ul/well antibody solution) a concentration of 0.5 - 2.0 ug/ml of this antibody is required. This antigen affinity purified antibody, in conjunction with Biotinylated Anti-Human TNF-alpha; ([TA328452]) as a detection antibody, allows the detection of at least 0.2 - 0.4 ng/well of recombinant Human TNF-alpha;