

Product datasheet for **TA328445**

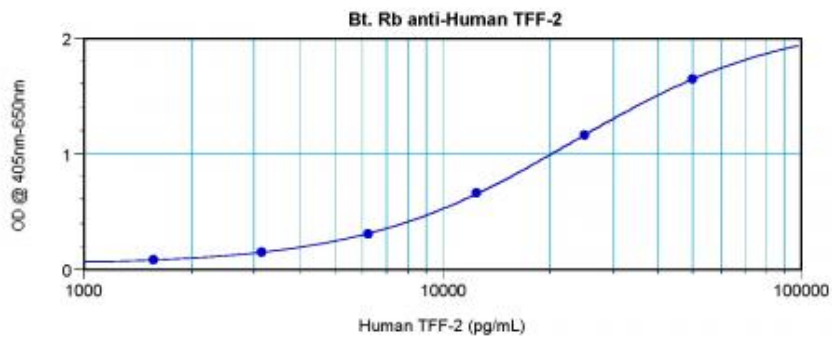
Spasmolytic Polypeptide (TFF2) Rabbit Polyclonal Antibody

Product data:

| | |
|-----------------------|---|
| Product Type: | Primary Antibodies |
| Applications: | ELISA |
| Recommended Dilution: | WB: 0.1-0.2ug/mL, ELISA: 0.25-2ug/mL |
| Reactivity: | Human |
| Host: | Rabbit |
| Isotype: | IgG |
| Clonality: | Polyclonal |
| Immunogen: | E.coli derived Recombinant Human TFF-2 |
| Formulation: | A sterile filtered antibody solution was lyophilized from PBS, pH 7.2. |
| Purification: | Produced from sera of rabbits immunized with highly pure recombinant Human TFF-2. Anti-Human TFF-2 specific antibody was purified by affinity chromatography and then biotinylated. |
| Conjugation: | Biotin |
| Storage: | Store at -20°C as received. |
| Stability: | Stable for 12 months from date of receipt. |
| Gene Name: | trefoil factor 2 |
| Database Link: | NP_005414 Entrez Gene 7032 Human Q03403 |
| Synonyms: | SML1; SP |
| Protein Families: | Druggable Genome, Secreted Protein |



[View online »](#)

Product images:

To detect Human TFF-2 by direct ELISA (using 100 ul/well) a concentration of approximately 1.0 ug/ml of this antibody is required. This biotinylated polyclonal antibody allows the detection of at least 0.2-0.4 ng/well of recombinant Human TFF-2.