

Product datasheet for **TA328444**

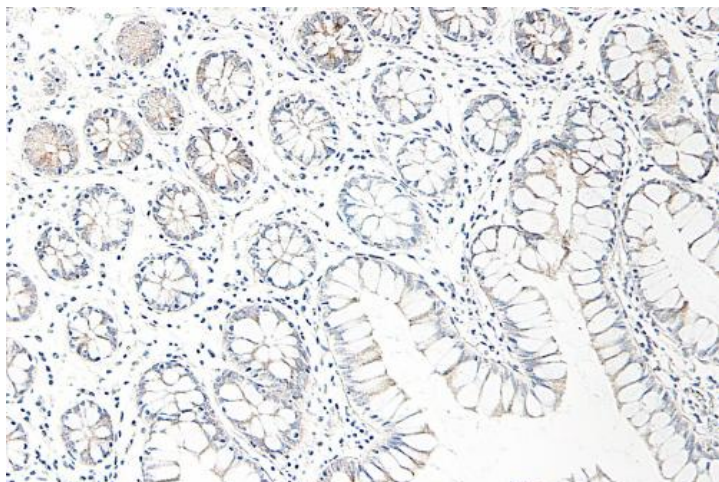
TECK (CCL25) Rabbit Polyclonal Antibody

Product data:

Product Type:	Primary Antibodies
Applications:	IHC
Recommended Dilution:	WB: 0.1-0.2ug/mL, ELISA: 0.25-2ug/mL, IHC: 0.25ug/mL - 1mg/mL
Reactivity:	Human
Host:	Rabbit
Isotype:	IgG
Clonality:	Polyclonal
Immunogen:	E.coli derived Recombinant Human TECK (CCL25)
Formulation:	A sterile filtered antibody solution was lyophilized from PBS, pH 7.2.
Purification:	Produced from sera of rabbits pre-immunized with highly pure (>98%) recombinant hTECK. Anti-Human TECK specific antibody was purified by affinity chromatography employing immobilized hTECK matrix.
Conjugation:	Unconjugated
Storage:	Store at -20°C as received.
Stability:	Stable for 12 months from date of receipt.
Gene Name:	C-C motif chemokine ligand 25
Database Link:	NP_005615 Entrez Gene 6370 Human O15444
Synonyms:	Ckb15; SCYA25; TECK
Note:	Neutralization: To yield one-half maximal inhibition [ND50] of the biological activity of hTECK (100 ng/ml), a concentration of 10-15 <=ug/ml of this antibody is required.
Protein Families:	Druggable Genome, Secreted Protein
Protein Pathways:	Chemokine signaling pathway, Cytokine-cytokine receptor interaction



[View online »](#)

Product images:

This antibody stained formalin-fixed, paraffin-embedded sections of human normal small bowel. The recommended concentration is 0.5 ug/ml-1.0ug/ml with an overnight incubation at 4C. An HRP-labeled polymer detection system was used with a DAB chromogen and a proteinase K antigen retrieval. Optimal concentrations and conditions may vary.