

Product datasheet for **TA328440**

SCF (KITLG) Rabbit Polyclonal Antibody

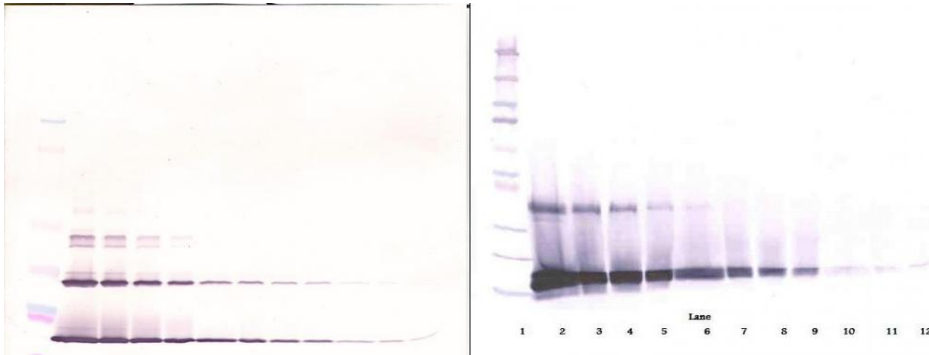
Product data:

Product Type:	Primary Antibodies
Applications:	ELISA, IHC, WB
Recommended Dilution:	WB: 0.1-0.2ug/mL, ELISA: 0.25-2ug/mL, IHC: 0.25ug/mL - 1mg/mL
Reactivity:	Human
Host:	Rabbit
Isotype:	IgG
Clonality:	Polyclonal
Immunogen:	E.coli derived Recombinant Human SCF
Formulation:	A sterile filtered antibody solution was lyophilized from PBS, pH 7.2.
Purification:	Produced from sera of rabbits pre-immunized with highly pure (>98%) recombinant hSCF. Anti-Human SCF specific antibody was purified by affinity chromatography employing immobilized hSCF matrix.
Conjugation:	Unconjugated
Storage:	Store at -20°C as received.
Stability:	Stable for 12 months from date of receipt.
Gene Name:	KIT ligand
Database Link:	NP_000890 Entrez Gene 4254 Human P21583
Synonyms:	FPH2; FPHH; Kitl; KL-1; MGF; SCF; SF; SHEP7
Note:	Neutralization: To yield one-half maximal inhibition [ND50] of the biological activity of hSCF (10.00 ng/ml), a concentration of 0.64-0.96 <=ug/ml of this antibody is required.
Protein Families:	Druggable Genome, Transmembrane
Protein Pathways:	Cytokine-cytokine receptor interaction, Hematopoietic cell lineage, Melanogenesis, Pathways in cancer

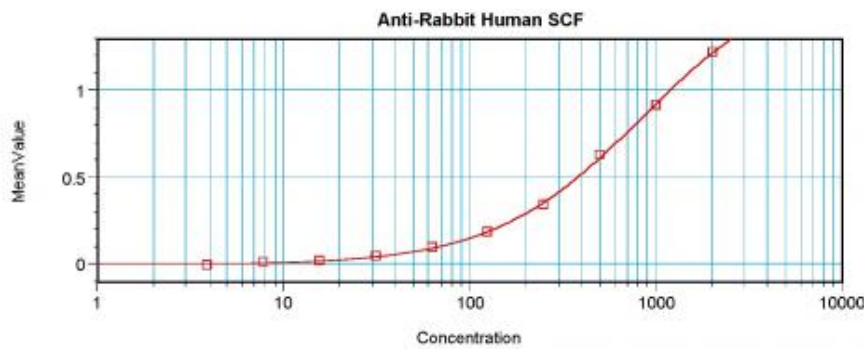


[View online »](#)

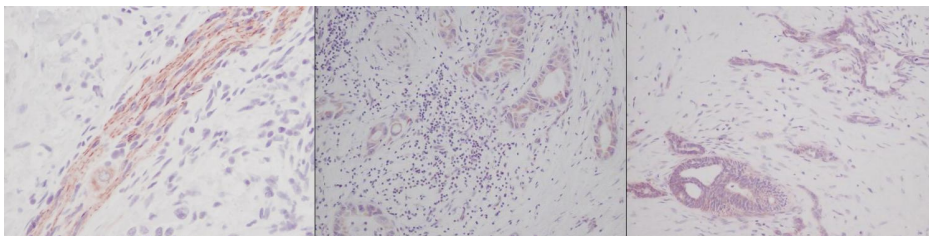
Product images:



To detect hSCF by sandwich ELISA (using 100 ul/well antibody solution) a concentration of 0.5 - 2.0 ug/ml of this antibody is required. This antigen affinity purified antibody, in conjunction with Biotinylated Anti-Human SCF ([TA328437]) as a detection antibody, allows the detection of at least 0.2 - 0.4 ng/well of recombinant hSCF.



To detect hSCF by sandwich ELISA (using 100 ul/well antibody solution) a concentration of 0.5 - 2.0 ug/ml of this antibody is required. This antigen affinity purified antibody, in conjunction with Biotinylated Anti-Human SCF ([TA328437]) as a detection antibody, allows the detection of at least 0.2 - 0.4 ng/well of recombinant hSCF.



To detect hSCF by sandwich ELISA (using 100 ul/well antibody solution) a concentration of 0.5 - 2.0 ug/ml of this antibody is required. This antigen affinity purified antibody, in conjunction with Biotinylated Anti-Human SCF ([TA328437]) as a detection antibody, allows the detection of at least 0.2 - 0.4 ng/well of recombinant hSCF.