

Product datasheet for **TA328434**

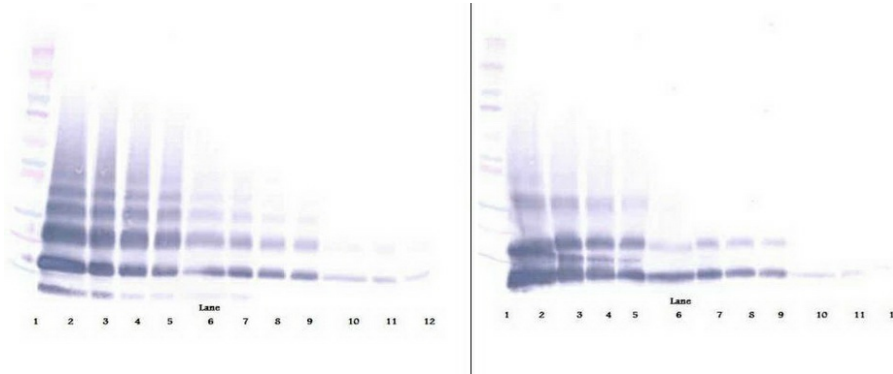
RELM beta (RETNLB) Rabbit Polyclonal Antibody

Product data:

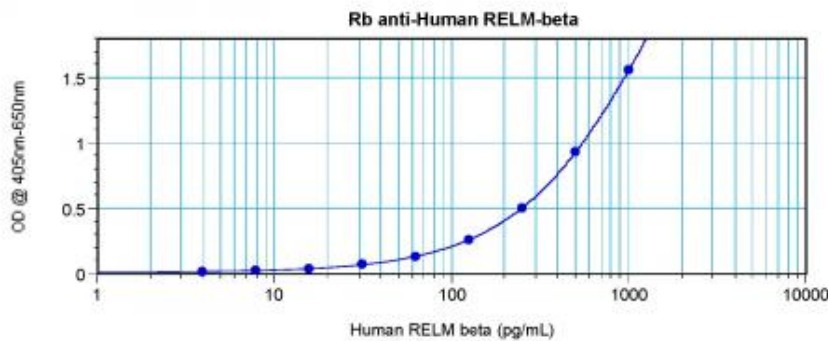
Product Type:	Primary Antibodies
Applications:	ELISA, IHC, WB
Recommended Dilution:	WB: 0.1-0.2ug/mL, ELISA: 0.25-2ug/mL, IHC: 0.25ug/mL - 1mg/mL
Reactivity:	Human
Host:	Rabbit
Isotype:	IgG
Clonality:	Polyclonal
Immunogen:	E.coli derived Recombinant Human RELMÎ²
Formulation:	A sterile filtered antibody solution was lyophilized from PBS, pH 7.2.
Purification:	Produced from sera of rabbits pre-immunized with highly pure recombinant Human RELMbeta. Anti-Human RELMbeta specific antibody was purified by affinity chromatography employing immobilized Human RELMbeta matrix.
Conjugation:	Unconjugated
Storage:	Store at -20°C as received.
Stability:	Stable for 12 months from date of receipt.
Gene Name:	resistin like beta
Database Link:	NP_115968 Entrez Gene 84666 Human Q9BQ08
Synonyms:	FIZZ1; FIZZ2; HXCP2; RELM-beta; RELMb; RELMbeta; XCP2
Protein Families:	Secreted Protein



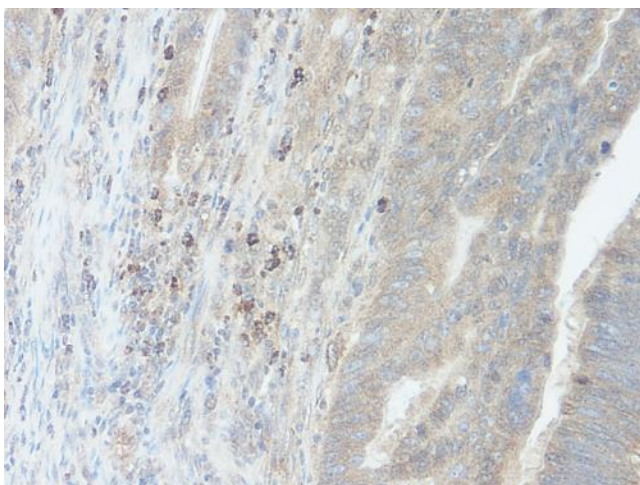
[View online »](#)

Product images:


To detect Human RELMbeta by sandwich ELISA (using 100 ul/well antibody solution) a concentration of 0.5 - 2.0 ug/ml of this antibody is required. This antigen affinity purified antibody, in conjunction with Biotinylated Anti-Human RELMbeta ([TA328433]) as a detection antibody, allows the detection of at least 0.2 - 0.4 ng/well of recombinant Human RELMbeta.



To detect Human RELMbeta by sandwich ELISA (using 100 ul/well antibody solution) a concentration of 0.5 - 2.0 ug/ml of this antibody is required. This antigen affinity purified antibody, in conjunction with Biotinylated Anti-Human RELMbeta ([TA328433]) as a detection antibody, allows the detection of at least 0.2 - 0.4 ng/well of recombinant Human RELMbeta.



To detect Human RELMbeta by sandwich ELISA (using 100 ul/well antibody solution) a concentration of 0.5 - 2.0 ug/ml of this antibody is required. This antigen affinity purified antibody, in conjunction with Biotinylated Anti-Human RELMbeta (TA328433) as a detection antibody, allows the detection of at least 0.2 - 0.4 ng/well of recombinant Human RELMbeta.