

Product datasheet for **TA328425**

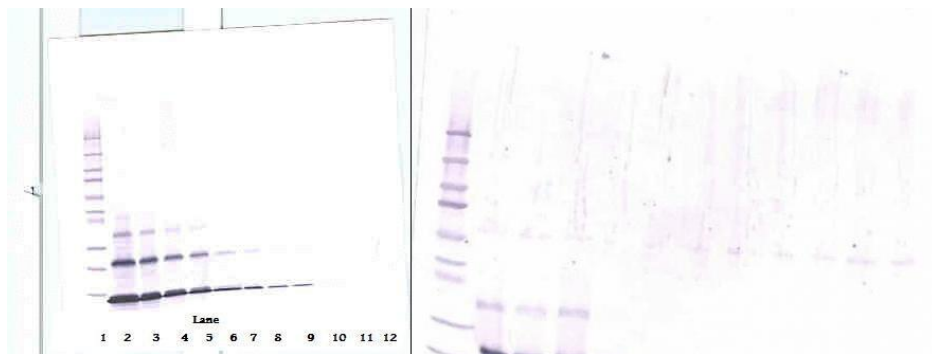
Parathyroid hormone related protein (PTHrP) Rabbit Polyclonal Antibody

Product data:

| | |
|-----------------------|---|
| Product Type: | Primary Antibodies |
| Applications: | WB |
| Recommended Dilution: | WB: 0.1-0.2ug/mL, ELISA: 0.25-2ug/mL |
| Reactivity: | Human |
| Host: | Rabbit |
| Isotype: | IgG |
| Clonality: | Polyclonal |
| Immunogen: | E.coli derived Recombinant Human PTHrP |
| Formulation: | A sterile filtered antibody solution was lyophilized from PBS, pH 7.2. |
| Purification: | Produced from sera of rabbits pre-immunized with highly pure (>98%) recombinant hPTHrP (human Parathyroid Hormone-related Protein). Anti-Human PTHrP specific antibody was purified by affinity chromatography employing immobilized hPTHrP matrix. |
| Conjugation: | Unconjugated |
| Storage: | Store at -20°C as received. |
| Stability: | Stable for 12 months from date of receipt. |
| Gene Name: | parathyroid hormone-like hormone |
| Database Link: | NP_002811 Entrez Gene 5744 Human P12272 |
| Synonyms: | BDE2; HHM; PLP; PTHR; PTHRP |
| Protein Families: | Druggable Genome, Secreted Protein |



[View online »](#)

Product images:

To detect hPTHrP by Western Blot analysis this antibody can be used at a concentration of 0.1 - 0.2 ug/ml. Used in conjunction with compatible secondary reagents the detection limit for recombinant hPTHrP is 1.5 - 3.0 ng/lane, under either reducing or non-reducing conditions.