

Product datasheet for **TA328413**

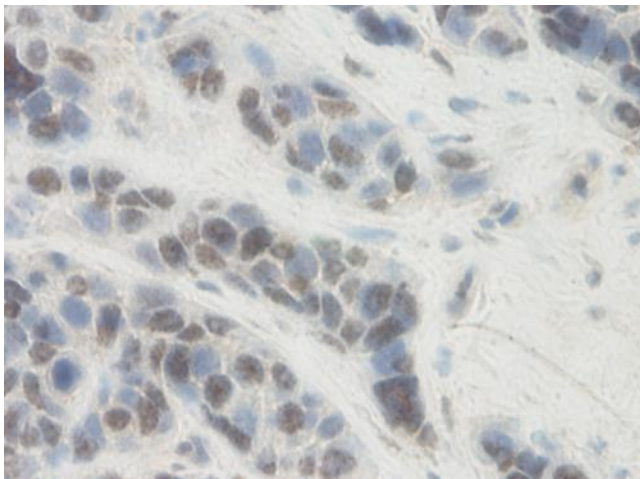
PAI1 (SERPINE1) Rabbit Polyclonal Antibody

Product data:

Product Type:	Primary Antibodies
Applications:	IHC
Recommended Dilution:	WB: 0.1-0.2ug/mL, ELISA: 0.25-2ug/mL, IHC: 0.25ug/mL - 1mg/mL
Reactivity:	Human
Host:	Rabbit
Isotype:	IgG
Clonality:	Polyclonal
Immunogen:	E.coli derived Recombinant Human PAI-1
Formulation:	A sterile filtered antibody solution was lyophilized from PBS, pH 7.2.
Purification:	Produced from sera of rabbits pre-immunized with highly pure (>98%) recombinant hPAI-1 (human Plasminogen Activator Inhibitor-1). Anti-Human PAI-1 specific antibody was purified by affinity chromatography employing immobilized hPAI-1 matrix.
Conjugation:	Unconjugated
Storage:	Store at -20°C as received.
Stability:	Stable for 12 months from date of receipt.
Gene Name:	serpin family E member 1
Database Link:	NP_000593 Entrez Gene 5054 Human P05121
Synonyms:	PAI; PAI-1; PAI1; PLANH1
Note:	Neutralization: To yield one-half maximal inhibition [ND50] of the biological activity of hPAI-1 (4.5 ug/ml), a concentration of at least 15.0 ug/ml of this antibody is required.
Protein Families:	Druggable Genome, Secreted Protein
Protein Pathways:	Complement and coagulation cascades, p53 signaling pathway



[View online »](#)

Product images:

This antibody stained formalin-fixed, paraffin-embedded sections of human breast invasive ductal carcinoma. The recommended concentration is 62.5 ng/ml with an overnight incubation at 4C. An HRP-labeled polymer detection system was used with a DAB chromogen. Heat induced antigen retrieval with a pH 6.0 sodium citrate buffer is recommended. Optimal concentrations and conditions may vary. *Additional Immunostaining data available. Please contact Tech Support for information.