

Product datasheet for **TA328405**

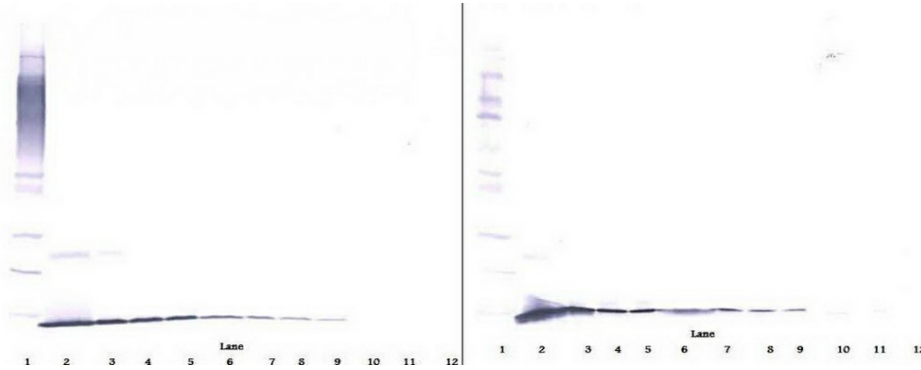
NGF Rabbit Polyclonal Antibody

Product data:

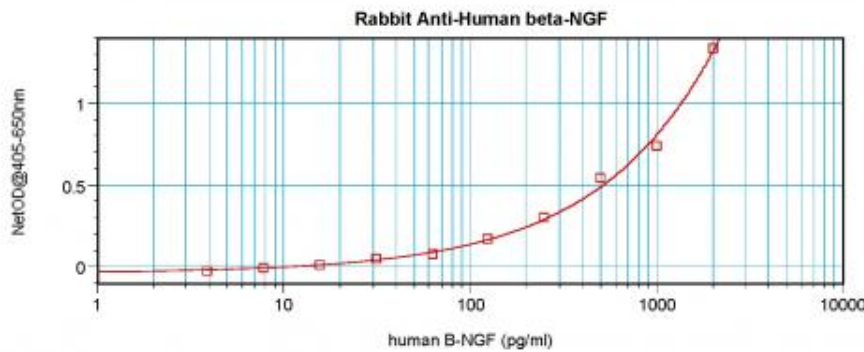
Product Type:	Primary Antibodies
Applications:	ELISA, IHC, WB
Recommended Dilution:	WB: 0.1-0.2ug/mL, ELISA: 0.25-2ug/mL, IHC: 0.25ug/mL - 1mg/mL
Reactivity:	Human
Host:	Rabbit
Isotype:	IgG
Clonality:	Polyclonal
Immunogen:	E.coli derived Recombinant Human β -NGF
Formulation:	A sterile filtered antibody solution was lyophilized from PBS, pH 7.2.
Purification:	Produced from sera of rabbits pre-immunized with highly pure recombinant Human beta-NGF. Anti-Human beta-NGF specific antibody was purified by affinity chromatography employing immobilized Human beta-NGF matrix.
Conjugation:	Unconjugated
Storage:	Store at -20°C as received.
Stability:	Stable for 12 months from date of receipt.
Gene Name:	nerve growth factor
Database Link:	NP_002497 Entrez Gene 4803 Human P01138
Synonyms:	Beta-NGF; HSN5; NGFB
Note:	Neutralization: To yield one-half maximal inhibition [ND50] of the biological activity of Human beta-NGF (1 ng/ml), a concentration of 0.05-0.08 \leq ug/ml of this antibody is required.
Protein Families:	Druggable Genome, Secreted Protein
Protein Pathways:	Apoptosis, MAPK signaling pathway, Neurotrophin signaling pathway



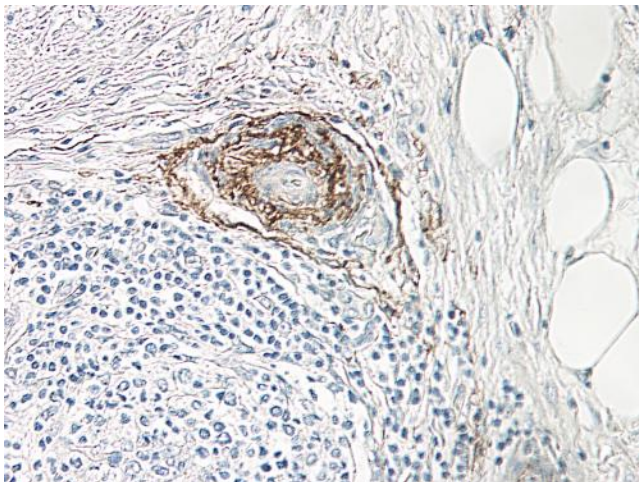
[View online »](#)

Product images:


To detect Human beta-NGF by sandwich ELISA (using 100 ul/well antibody solution) a concentration of 0.5 - 2.0 ug/ml of this antibody is required. This antigen affinity purified antibody, in conjunction with Biotinylated Anti-Human beta-NGF ([TA328404]) as a detection antibody, allows the detection of at least 0.2 - 0.4 ng/well of recombinant Human beta-NGF.



To detect Human beta-NGF by sandwich ELISA (using 100 ul/well antibody solution) a concentration of 0.5 - 2.0 ug/ml of this antibody is required. This antigen affinity purified antibody, in conjunction with Biotinylated Anti-Human beta-NGF ([TA328404]) as a detection antibody, allows the detection of at least 0.2 - 0.4 ng/well of recombinant Human beta-NGF.



To detect Human beta-NGF by sandwich ELISA (using 100 ul/well antibody solution) a concentration of 0.5 - 2.0 ug/ml of this antibody is required. This antigen affinity purified antibody, in conjunction with Biotinylated Anti-Human beta-NGF ([TA328404]) as a detection antibody, allows the detection of at least 0.2 - 0.4 ng/well of recombinant Human beta-NGF.