

## Product datasheet for **TA328403**

### Neuroserpin (SERPINI1) Rabbit Polyclonal Antibody

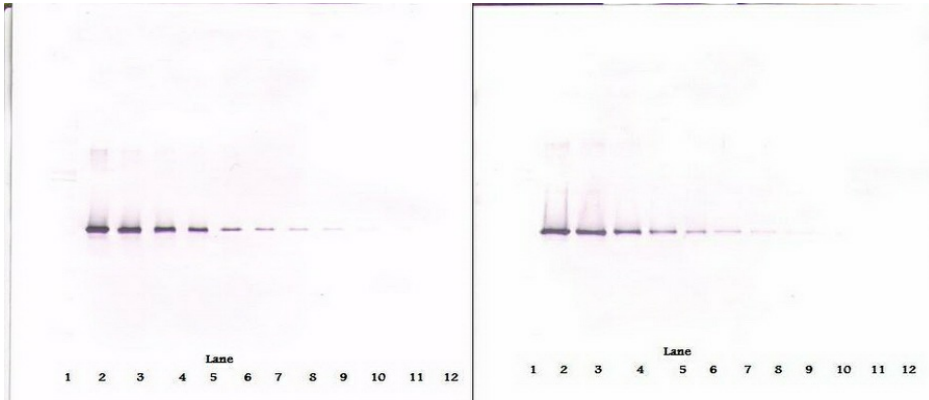
#### Product data:

Product Type:	Primary Antibodies
Applications:	ELISA, WB
Recommended Dilution:	WB: 0.1-0.2ug/mL, ELISA: 0.25-2ug/mL
Reactivity:	Human
Host:	Rabbit
Isotype:	IgG
Clonality:	Polyclonal
Immunogen:	E.coli derived Recombinant Human Neuroserpin
Formulation:	A sterile filtered antibody solution was lyophilized from PBS, pH 7.2.
Purification:	Produced from sera of rabbits pre-immunized with highly pure (>98%) recombinant hNeuroserpin (human Neuroserpin). Anti-Human Neuroserpin specific antibody was purified by affinity chromatography employing immobilized hNeuroserpin matrix.
Conjugation:	Unconjugated
Storage:	Store at -20°C as received.
Stability:	Stable for 12 months from date of receipt.
Gene Name:	serpin family I member 1
Database Link:	<a href="#">NP_005016</a> <a href="#">Entrez Gene 5274 Human</a> <a href="#">Q99574</a>
Synonyms:	neuroserpin; PI12
Protein Families:	Druggable Genome, Secreted Protein

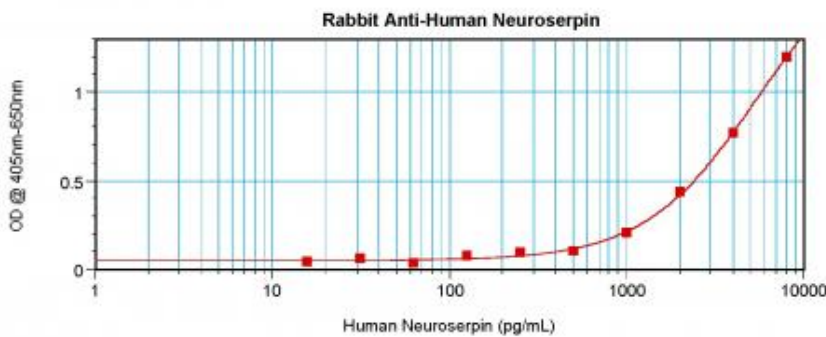


[View online »](#)

Product images:



To detect hNeuroserpin by sandwich ELISA (using 100ul/well antibody solution) a concentration of 0.5 - 2.0 ug/ml of this antibody is required. This antigen affinity purified antibody, in conjunction with Biotinylated Anti-Human Neuroserpin ([TA328402]) as a detection antibody, allows the detection of at least 0.2 - 0.4 ng/well of recombinant hNeuroserpin.



To detect hNeuroserpin by sandwich ELISA (using 100ul/well antibody solution) a concentration of 0.5 - 2.0 ug/ml of this antibody is required. This antigen affinity purified antibody, in conjunction with Biotinylated Anti-Human Neuroserpin ([TA328402]) as a detection antibody, allows the detection of at least 0.2 - 0.4 ng/well of recombinant hNeuroserpin.