

Product datasheet for **TA328402**

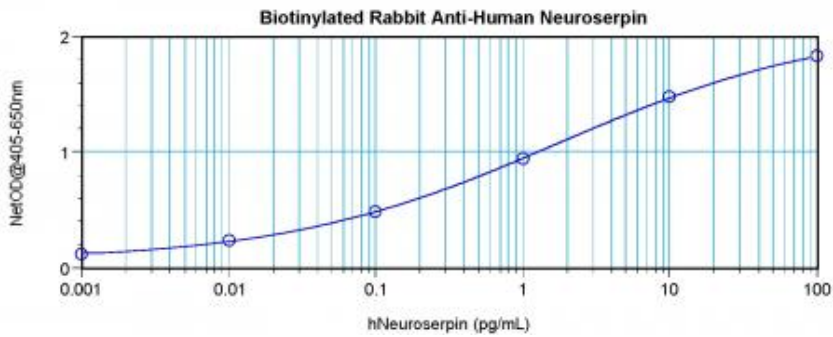
Neuroserpin (SERPINI1) Rabbit Polyclonal Antibody

Product data:

Product Type:	Primary Antibodies
Applications:	ELISA
Recommended Dilution:	WB: 0.1-0.2ug/mL, ELISA: 0.25-2ug/mL
Reactivity:	Human
Host:	Rabbit
Isotype:	IgG
Clonality:	Polyclonal
Immunogen:	E.coli derived Recombinant Human Neuroserpin
Formulation:	A sterile filtered antibody solution was lyophilized from PBS, pH 7.2.
Purification:	Produced from sera of rabbits pre-immunized with highly pure (>98%) recombinant hNeuroserpin (human Neuroserpin). Anti-Human Neuroserpin specific antibody was purified by affinity chromatography and then biotinylated.
Conjugation:	Biotin
Storage:	Store at -20°C as received.
Stability:	Stable for 12 months from date of receipt.
Gene Name:	serpin family I member 1
Database Link:	NP_005016 Entrez Gene 5274 Human Q99574
Synonyms:	neuroserpin; PI12
Protein Families:	Druggable Genome, Secreted Protein



[View online »](#)

Product images:

To detect Human Neuroserpin by direct ELISA (using 100 μ l/well) a concentration of approximately 1.0 μ g/ml of this antibody is required. This biotinylated polyclonal antibody allows the detection of at least 0.2-0.4 ng/well of recombinant Human Neuroserpin.