

## Product datasheet for **TA328400**

### **CXCL7 (PPBP) Goat Polyclonal Antibody**

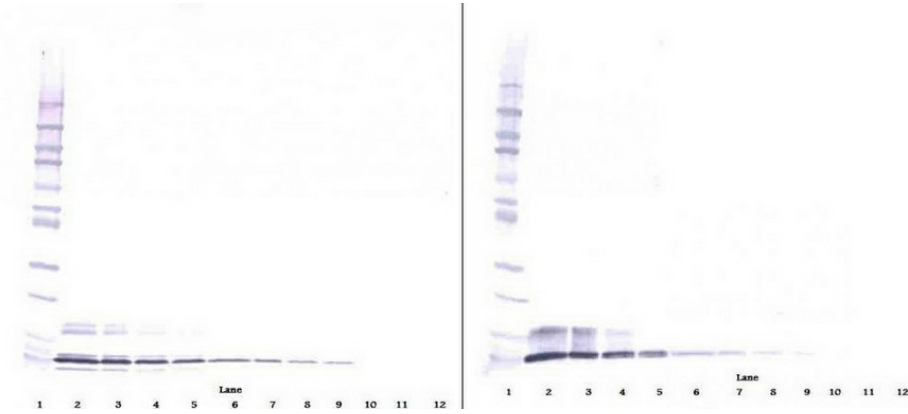
#### **Product data:**

<b>Product Type:</b>	Primary Antibodies
<b>Applications:</b>	ELISA, WB
<b>Recommended Dilution:</b>	WB: 0.1-0.2ug/mL, ELISA: 0.25-2ug/mL
<b>Reactivity:</b>	Human
<b>Host:</b>	Goat
<b>Isotype:</b>	IgG
<b>Clonality:</b>	Polyclonal
<b>Immunogen:</b>	E.coli derived Recombinant Human NAP-2 (CXCL7)
<b>Formulation:</b>	A sterile filtered antibody solution was lyophilized from PBS, pH 7.2.
<b>Purification:</b>	Produced from sera of goats pre-immunized with highly pure (>98%) recombinant hNAP-2. Anti-Human NAP-2 specific antibody was purified by affinity chromatography employing immobilized hNAP-2 matrix.
<b>Conjugation:</b>	Unconjugated
<b>Storage:</b>	Store at -20°C as received.
<b>Stability:</b>	Stable for 12 months from date of receipt.
<b>Gene Name:</b>	pro-platelet basic protein
<b>Database Link:</b>	<a href="#">NP_002695</a> <a href="#">Entrez Gene 5473 Human P02775</a>
<b>Synonyms:</b>	B-TG1; Beta-TG; CTAP-III; CTAP3; CTAPIII; CXCL7; LA-PF4; LDGF; MDGF; NAP-2; PBP; SCYB7; TC1; TC2
<b>Protein Families:</b>	Druggable Genome, Secreted Protein, Transmembrane
<b>Protein Pathways:</b>	Chemokine signaling pathway, Cytokine-cytokine receptor interaction

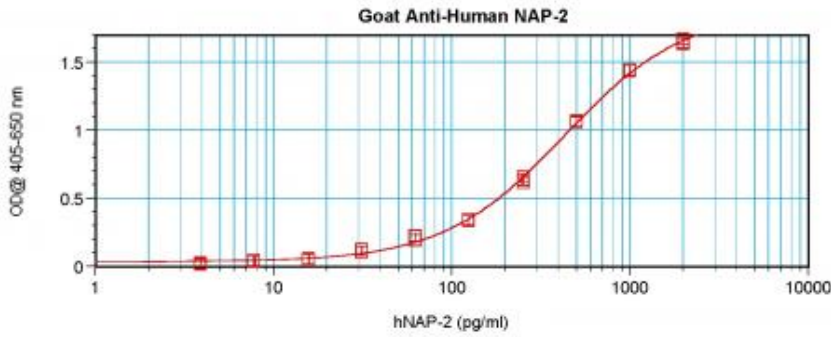


[View online »](#)

Product images:



To detect hNAP-2 by sandwich ELISA (using 100 ul/well antibody solution) a concentration of 0.5 - 2.0 ug/ml of this antibody is required. This antigen affinity purified antibody, in conjunction with Biotinylated Anti-Human NAP-2 ([TA328399]) as a detection antibody, allows the detection of at least 0.2 - 0.4 ng/well of recombinant hNAP-2.



To detect hNAP-2 by sandwich ELISA (using 100 ul/well antibody solution) a concentration of 0.5 - 2.0 ug/ml of this antibody is required. This antigen affinity purified antibody, in conjunction with Biotinylated Anti-Human NAP-2 ([TA328399]) as a detection antibody, allows the detection of at least 0.2 - 0.4 ng/well of recombinant hNAP-2.