

## Product datasheet for **TA328397**

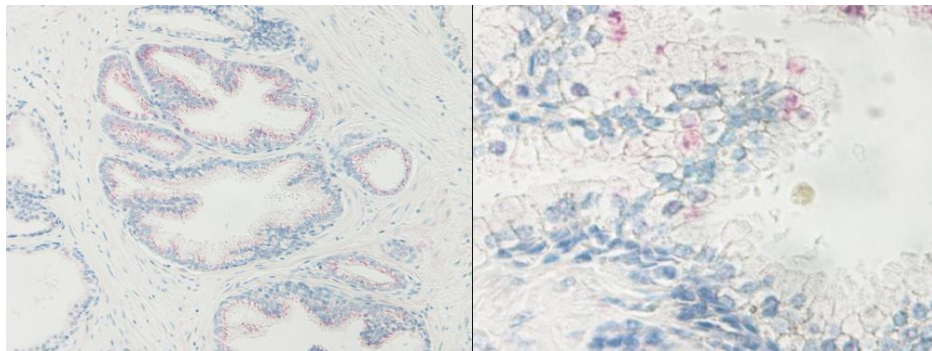
### **NANOG Rabbit Polyclonal Antibody**

#### **Product data:**

<b>Product Type:</b>	Primary Antibodies
<b>Applications:</b>	IHC
<b>Recommended Dilution:</b>	WB: 0.1-0.2ug/mL, ELISA: 0.25-2ug/mL, IHC: 0.25ug/mL - 1 mg/mL
<b>Reactivity:</b>	Human
<b>Host:</b>	Rabbit
<b>Isotype:</b>	IgG
<b>Clonality:</b>	Polyclonal
<b>Immunogen:</b>	E.coli derived Recombinant Human Nanog
<b>Formulation:</b>	A sterile filtered antibody solution was lyophilized from PBS, pH 7.2.
<b>Purification:</b>	Produced from sera of rabbits pre-immunized with highly pure (>98%) recombinant hNanog. Anti-Human Nanog specific antibody was purified by affinity chromatography employing immobilized hNanog matrix.
<b>Conjugation:</b>	Unconjugated
<b>Storage:</b>	Store at -20°C as received.
<b>Stability:</b>	Stable for 12 months from date of receipt.
<b>Gene Name:</b>	Nanog homeobox
<b>Database Link:</b>	<a href="#">NP_079141</a> <a href="#">Entrez Gene 79923 Human</a> <a href="#">Q9H9S0</a>
<b>Synonyms:</b>	homeobox transcription factor Nanog; homeobox transcription factor Nanog-delta 48; Nanog homeobox
<b>Protein Families:</b>	Cancer stem cells, Embryonic stem cells, ES Cell Differentiation/IPS, Induced pluripotent stem cells, Stem cell - Pluripotency



[View online »](#)

**Product images:**

This antibody stained formalin-fixed, paraffin-embedded sections of human prostate malignant adenocarcinoma. The recommended concentration is 0.5 mg/ml with an overnight incubation at 4C. An alkaline phosphatase-labeled polymer detection system was used with a non-alcohol soluble red chromogen. Heat induced antigen retrieval with a pH 6.0 sodium citrate buffer is recommended. Optimal concentrations and conditions may vary.