

Product datasheet for **TA328393**

Macrophage Inflammatory Protein 3 alpha (CCL20) Rabbit Polyclonal Antibody

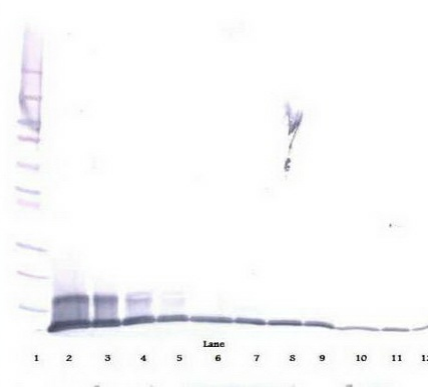
Product data:

Product Type:	Primary Antibodies
Applications:	ELISA, IHC, WB
Recommended Dilution:	WB: 0.1-0.2ug/mL, ELISA: 0.25-2ug/mL, IHC: 0.25ug/mL - 1mg/mL
Reactivity:	Human
Host:	Rabbit
Isotype:	IgG
Clonality:	Polyclonal
Immunogen:	E.coli derived Recombinant Human MIP-3 α (CCL20)
Formulation:	A sterile filtered antibody solution was lyophilized from PBS, pH 7.2.
Purification:	Produced from sera of rabbits pre-immunized with highly pure recombinant Human MIP-3 α . Anti-Human MIP-3 α specific antibody was purified by affinity chromatography employing immobilized Human MIP-3 α matrix.
Conjugation:	Unconjugated
Storage:	Store at -20°C as received.
Stability:	Stable for 12 months from date of receipt.
Gene Name:	C-C motif chemokine ligand 20
Database Link:	NP_004582 Entrez Gene 6364 Human P78556
Synonyms:	CKb4; Exodus; LARC; MIP-3-alpha; MIP-3a; MIP3A; SCYA20; ST38
Protein Families:	Druggable Genome, Secreted Protein
Protein Pathways:	Chemokine signaling pathway, Cytokine-cytokine receptor interaction

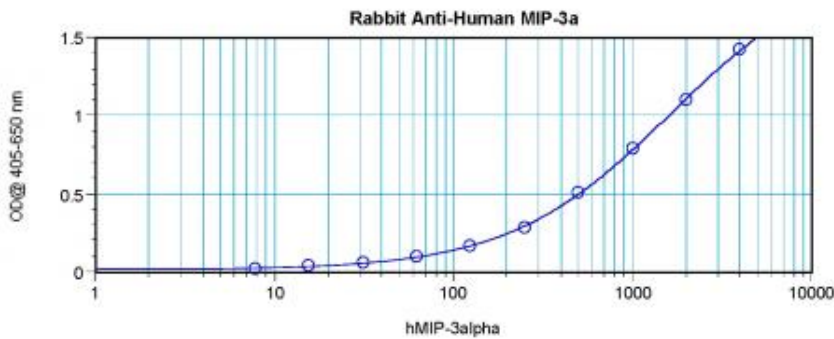


[View online »](#)

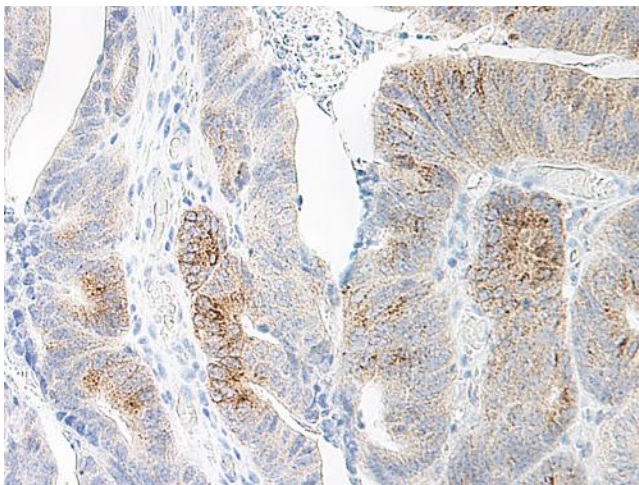
Product images:



To detect Human MIP-3alpha; by sandwich ELISA (using 100 ul/well antibody solution) a concentration of 0.5 - 2.0 ug/ml of this antibody is required. This antigen affinity purified antibody, in conjunction with Biotinylated Anti-Human MIP-3alpha; ([TA328392]) as a detection antibody, allows the detection of at least 0.2 - 0.4 ng/well of recombinant Human MIP-3alpha;



To detect Human MIP-3alpha; by sandwich ELISA (using 100 ul/well antibody solution) a concentration of 0.5 - 2.0 ug/ml of this antibody is required. This antigen affinity purified antibody, in conjunction with Biotinylated Anti-Human MIP-3alpha; ([TA328392]) as a detection antibody, allows the detection of at least 0.2 - 0.4 ng/well of recombinant Human MIP-3alpha;



To detect Human MIP-3alpha; by sandwich ELISA (using 100 ul/well antibody solution) a concentration of 0.5 - 2.0 ug/ml of this antibody is required. This antigen affinity purified antibody, in conjunction with Biotinylated Anti-Human MIP-3alpha; ([TA328392]) as a detection antibody, allows the detection of at least 0.2 - 0.4 ng/well of recombinant Human MIP-3alpha;