

## Product datasheet for **TA328388**

### CCL3 Goat Polyclonal Antibody

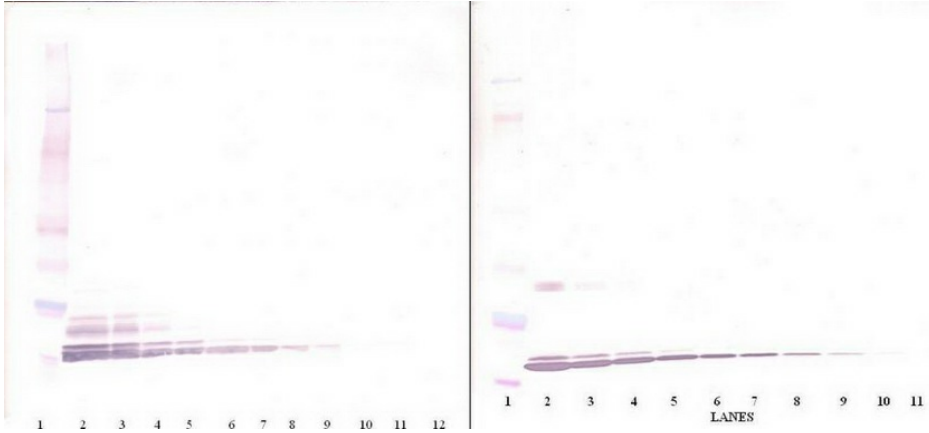
#### Product data:

Product Type:	Primary Antibodies
Applications:	ELISA, WB
Recommended Dilution:	WB: 0.1-0.2ug/mL, ELISA: 0.25-2ug/mL, IHC: 0.25ug/mL - 1 mg/mL
Reactivity:	Human
Host:	Goat
Isotype:	IgG
Clonality:	Polyclonal
Immunogen:	E.coli derived Recombinant Human MIP-1 $\alpha$ (CCL3)
Formulation:	A sterile filtered antibody solution was lyophilized from PBS, pH 7.2.
Purification:	Produced from sera of goats pre-immunized with highly pure recombinant Human MIP-1 $\alpha$ . Anti-Human MIP-1 $\alpha$ specific antibody was purified by affinity chromatography employing immobilized Human MIP-1 $\alpha$ matrix.
Conjugation:	Unconjugated
Storage:	Store at -20°C as received.
Stability:	Stable for 12 months from date of receipt.
Gene Name:	C-C motif chemokine ligand 3
Database Link:	<a href="#">NP_002974</a> <a href="#">Entrez Gene 6348 Human P10147</a>
Synonyms:	G0S19-1; LD78ALPHA; MIP-1-alpha; MIP1A; SCYA3
Protein Families:	Druggable Genome, Secreted Protein
Protein Pathways:	Chemokine signaling pathway, Cytokine-cytokine receptor interaction, Toll-like receptor signaling pathway

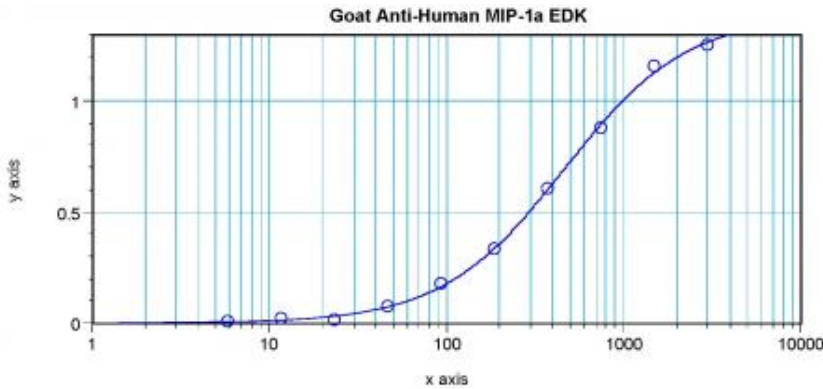


[View online »](#)

**Product images:**



To detect Human MIP-1alpha; by sandwich ELISA (using 100 ul/well antibody solution) a concentration of 0.5 - 2.0 ug/ml of this antibody is required. This antigen affinity purified antibody, in conjunction with Biotinylated Anti-Human MIP-1alpha; ([TA328387]) as a detection antibody, allows the detection of at least 0.2 - 0.4 ng/well of recombinant Human MIP-1 alpha;.



To detect Human MIP-1alpha; by sandwich ELISA (using 100 ul/well antibody solution) a concentration of 0.5 - 2.0 ug/ml of this antibody is required. This antigen affinity purified antibody, in conjunction with Biotinylated Anti-Human MIP-1alpha; ([TA328387]) as a detection antibody, allows the detection of at least 0.2 - 0.4 ng/well of recombinant Human MIP-1 alpha;.