

Product datasheet for **TA328385**

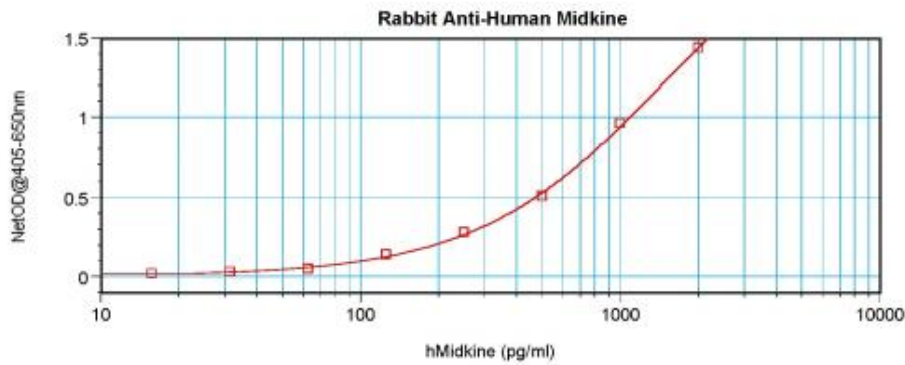
Midkine (MDK) Rabbit Polyclonal Antibody

Product data:

Product Type:	Primary Antibodies
Applications:	ELISA
Recommended Dilution:	WB: 0.1-0.2ug/mL, ELISA: 0.25-2ug/mL, IHC: 0.25ug/mL - 1mg/mL
Reactivity:	Human
Host:	Rabbit
Isotype:	IgG
Clonality:	Polyclonal
Immunogen:	E.coli derived Recombinant Human Midkine
Formulation:	A sterile filtered antibody solution was lyophilized from PBS, pH 7.2.
Purification:	Produced from sera of rabbits pre-immunized with highly pure (>98%) recombinant hMidkine. Anti-Human Midkine specific antibody was purified by affinity chromatography employing immobilized hMidkine matrix.
Conjugation:	Unconjugated
Storage:	Store at -20°C as received.
Stability:	Stable for 12 months from date of receipt.
Gene Name:	midkine (neurite growth-promoting factor 2)
Database Link:	NP_002382 Entrez Gene 4192 Human P21741
Synonyms:	ARAP; MK; NRGF2
Protein Families:	Druggable Genome, Secreted Protein, Transmembrane



[View online »](#)

Product images:

To detect hMidkine by sandwich ELISA (using 100 ul/well antibody solution) a concentration of 0.5 - 2.0 ug/ml of this antibody is required. This antigen affinity purified antibody, in conjunction with Biotinylated Anti-Human Midkine as a detection antibody, allows the detection of at least 0.2 - 0.4 ng/well of recombinant hMidkine.