

## Product datasheet for **TA328375**

### **MCP1 (CCL2) Rabbit Polyclonal Antibody**

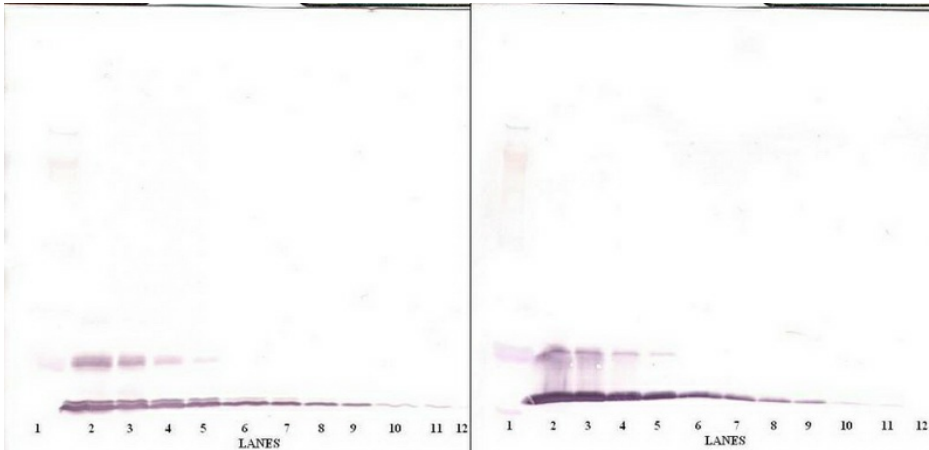
#### **Product data:**

<b>Product Type:</b>	Primary Antibodies
<b>Applications:</b>	ELISA, IHC, WB
<b>Recommended Dilution:</b>	WB: 0.1-0.2ug/mL, ELISA: 0.25-2ug/mL, IHC: 0.25ug/mL - 1mg/mL
<b>Reactivity:</b>	Human
<b>Host:</b>	Rabbit
<b>Isotype:</b>	IgG
<b>Clonality:</b>	Polyclonal
<b>Immunogen:</b>	E.coli derived Recombinant Human MCP-1 (CCL2)
<b>Formulation:</b>	A sterile filtered antibody solution was lyophilized from PBS, pH 7.2.
<b>Purification:</b>	Produced from sera of rabbits pre-immunized with highly pure (>98%) recombinant hMCP-1(MCAF). Anti-Human MCP-1(MCAF) specific antibody was purified by affinity chromatography employing immobilized hMCP-1(MCAF) matrix.
<b>Conjugation:</b>	Unconjugated
<b>Storage:</b>	Store at -20°C as received.
<b>Stability:</b>	Stable for 12 months from date of receipt.
<b>Gene Name:</b>	C-C motif chemokine ligand 2
<b>Database Link:</b>	<a href="#">NP_002973</a> <a href="#">Entrez Gene 6347 Human</a> <a href="#">P13500</a>
<b>Synonyms:</b>	GDCCF-2; HC11; HSMCR30; MCAF; MCP-1; MCP1; SCYA2; SMC-CF
<b>Protein Families:</b>	Druggable Genome, Secreted Protein
<b>Protein Pathways:</b>	Chemokine signaling pathway, Cytokine-cytokine receptor interaction, NOD-like receptor signaling pathway

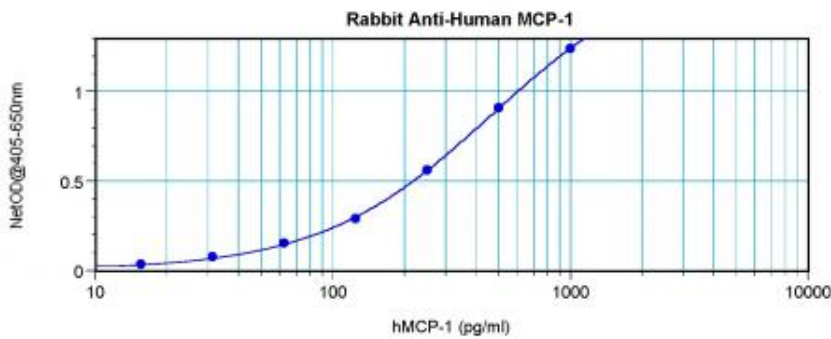


[View online »](#)

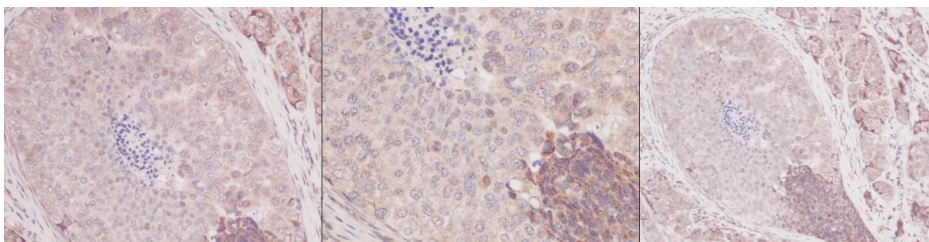
**Product images:**



To detect hMCP-1 (MCAF) by sandwich ELISA (using 100 ul/well antibody solution) a concentration of 0.5 - 2.0 ug/ml of this antibody is required. This antigen affinity purified antibody, in conjunction with Biotinylated Anti-Human MCP-1 (MCAF) ([TA328374]) as a detection antibody, allows the detection of at least 0.2 - 0.4 ng/well of recombinant hMCP-1 (MCAF).



To detect hMCP-1 (MCAF) by sandwich ELISA (using 100 ul/well antibody solution) a concentration of 0.5 - 2.0 ug/ml of this antibody is required. This antigen affinity purified antibody, in conjunction with Biotinylated Anti-Human MCP-1 (MCAF) ([TA328374]) as a detection antibody, allows the detection of at least 0.2 - 0.4 ng/well of recombinant hMCP-1 (MCAF).



To detect hMCP-1 (MCAF) by sandwich ELISA (using 100 ul/well antibody solution) a concentration of 0.5 - 2.0 ug/ml of this antibody is required. This antigen affinity purified antibody, in conjunction with Biotinylated Anti-Human MCP-1 (MCAF) ([TA328374]) as a detection antibody, allows the detection of at least 0.2 - 0.4 ng/well of recombinant hMCP-1 (MCAF).