

## Product datasheet for **TA328374**

### **MCP1 (CCL2) Rabbit Polyclonal Antibody**

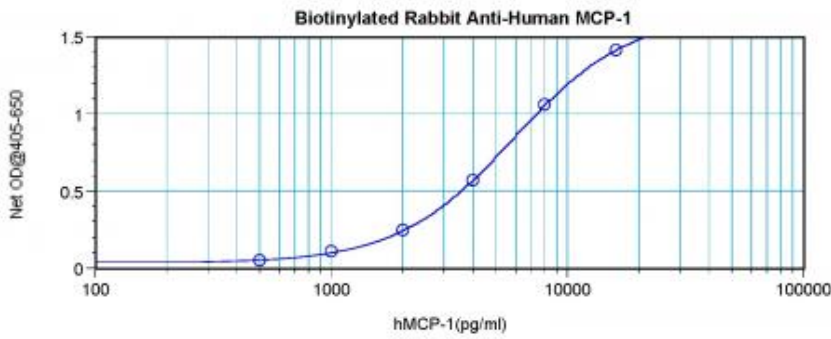
#### **Product data:**

<b>Product Type:</b>	Primary Antibodies
<b>Applications:</b>	ELISA
<b>Recommended Dilution:</b>	WB: 0.1-0.2ug/mL, ELISA: 0.25-2ug/mL
<b>Reactivity:</b>	Human
<b>Host:</b>	Rabbit
<b>Isotype:</b>	IgG
<b>Clonality:</b>	Polyclonal
<b>Immunogen:</b>	E.coli derived Recombinant Human MCP-1 (CCL2)
<b>Formulation:</b>	A sterile filtered antibody solution was lyophilized from PBS, pH 7.2.
<b>Purification:</b>	Produced from sera of rabbits pre-immunized with highly pure (>98%) recombinant hMCP-1/MCAF. Anti-Human MCP-1/MCAF specific antibody was purified by affinity chromatography and then biotinylated.
<b>Conjugation:</b>	Biotin
<b>Storage:</b>	Store at -20°C as received.
<b>Stability:</b>	Stable for 12 months from date of receipt.
<b>Gene Name:</b>	C-C motif chemokine ligand 2
<b>Database Link:</b>	<a href="#">NP_002973</a> <a href="#">Entrez Gene 6347 Human P13500</a>
<b>Synonyms:</b>	GDCCF-2; HC11; HSMCR30; MCAF; MCP-1; MCP1; SCYA2; SMC-CF
<b>Protein Families:</b>	Druggable Genome, Secreted Protein
<b>Protein Pathways:</b>	Chemokine signaling pathway, Cytokine-cytokine receptor interaction, NOD-like receptor signaling pathway

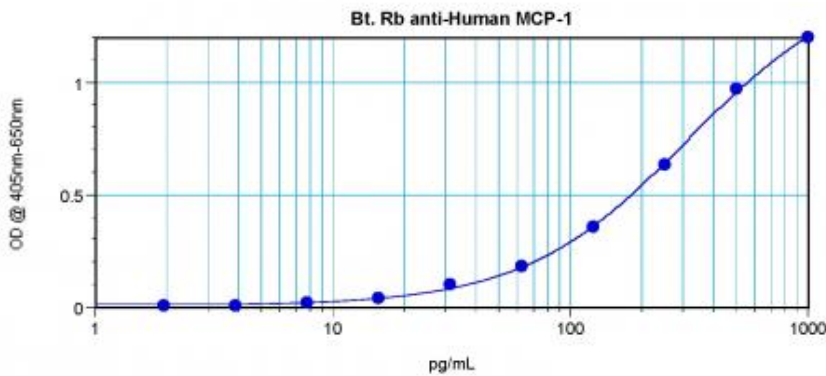


[View online »](#)

Product images:



To detect hMCP-1/MCAF by direct ELISA (using 100 ul/well antibody solution) a concentration of 0.25-1.0 ug/ml of this antibody is required. This biotinylated polyclonal antibody, in conjunction with compatible secondary reagents, allows the detection of at least 0.2-0.4 ng/well of recombinant hMCP-1/MCAF.



To detect hMCP-1/MCAF by sandwich ELISA (using 100 ul/well antibody solution) a concentration of 0.25-1.0 ug/ml of this antibody is required. This biotinylated polyclonal antibody, in conjunction with Polyclonal Anti-Human MCP-1/MCAF ([TA328375]) as a capture antibody, allows the detection of at least 0.2-0.4 ng/well of recombinant hMCP-1/MCAF.