

Product datasheet for **TA328368**

Lymphotactin (XCL1) Rabbit Polyclonal Antibody

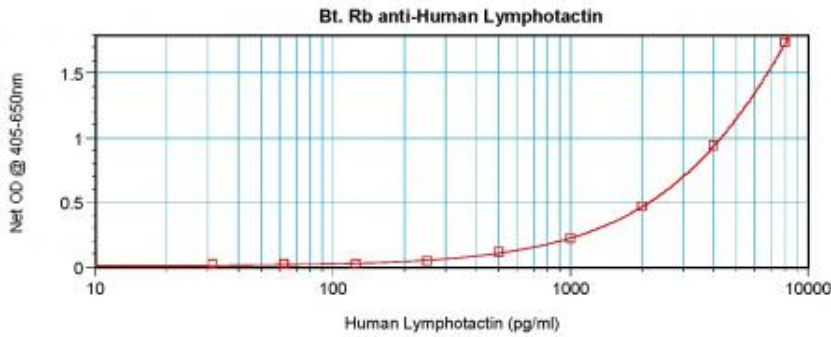
Product data:

Product Type:	Primary Antibodies
Applications:	ELISA
Recommended Dilution:	WB: 0.1-0.2ug/mL, ELISA: 0.25-2ug/mL
Reactivity:	Human
Host:	Rabbit
Isotype:	IgG
Clonality:	Polyclonal
Immunogen:	E.coli derived Recombinant Human Lymphotactin (XCL1)
Formulation:	A sterile filtered antibody solution was lyophilized from PBS, pH 7.2.
Purification:	Produced from sera of rabbits pre-immunized with highly pure (>98%) recombinant hLymphotactin. Anti-Human Lymphotactin specific antibody was purified by affinity chromatography and then biotinylated.
Conjugation:	Biotin
Storage:	Store at -20°C as received.
Stability:	Stable for 12 months from date of receipt.
Gene Name:	X-C motif chemokine ligand 1
Database Link:	NP_002986 Entrez Gene 6375 Human P47992
Synonyms:	ATAC; LPTN; LTN; SCM-1; SCM-1a; SCM1; SCM1A; SCYC1
Protein Families:	Druggable Genome, Secreted Protein
Protein Pathways:	Chemokine signaling pathway, Cytokine-cytokine receptor interaction

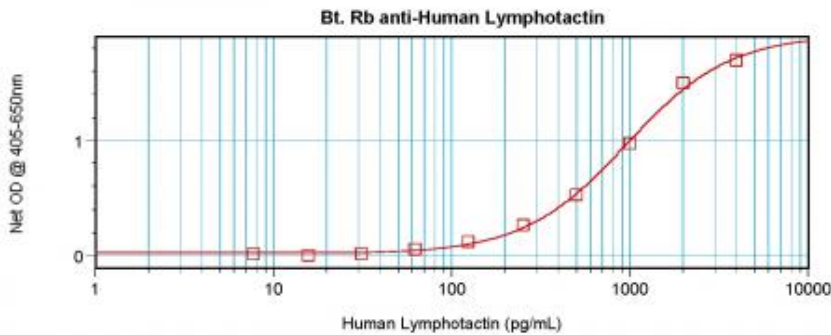


[View online »](#)

Product images:



To detect hLymphotactin by direct ELISA (using 100 ul/well antibody solution) a concentration of 0.25-1.0 ug/ml of this antibody is required. This biotinylated polyclonal antibody, in conjunction with compatible secondary reagents, allows the detection of at least 0.2-0.4 ng/well of recombinant hLymphotactin.



To detect hLymphotactin by sandwich ELISA (using 100 ul/well antibody solution) a concentration of 0.25-1.0 ug/ml of this antibody is required. This biotinylated polyclonal antibody, in conjunction with Polyclonal Anti-Human Lymphotactin ([TA328369]) as a capture antibody, allows the detection of at least 0.2-0.4 ng/well of recombinant hLymphotactin.