

Product datasheet for **TA328365**

LEC (CCL16) Goat Polyclonal Antibody

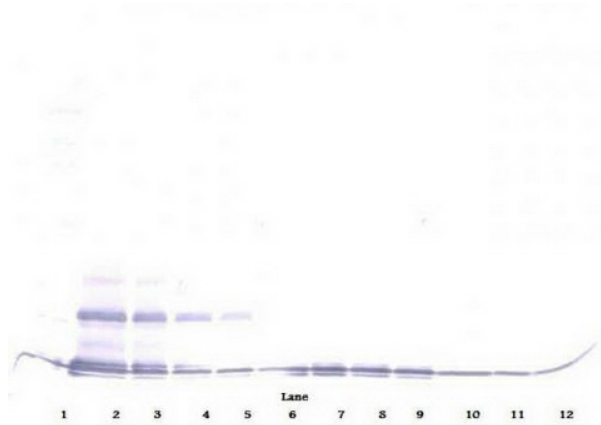
Product data:

Product Type:	Primary Antibodies
Applications:	ELISA, WB
Recommended Dilution:	WB: 0.1-0.2ug/mL, ELISA: 0.25-2ug/mL
Reactivity:	Human
Host:	Goat
Isotype:	IgG
Clonality:	Polyclonal
Immunogen:	E.coli derived Recombinant Human LEC (CCL16)
Formulation:	A sterile filtered antibody solution was lyophilized from PBS, pH 7.2.
Purification:	Produced from sera of goats pre-immunized with highly pure (>98%) recombinant hLEC. Anti-Human LEC specific antibody was purified by affinity chromatography employing immobilized hLEC matrix.
Conjugation:	Unconjugated
Storage:	Store at -20°C as received.
Stability:	Stable for 12 months from date of receipt.
Gene Name:	C-C motif chemokine ligand 16
Database Link:	NP_004581 Entrez Gene 6360 Human O15467
Synonyms:	CKb12; HCC-4; ILINCK; LCC-1; LEC; LMC; Mtn-1; NCC-4; NCC4; SCYA16; SCYL4
Protein Families:	Druggable Genome, Secreted Protein
Protein Pathways:	Chemokine signaling pathway, Cytokine-cytokine receptor interaction

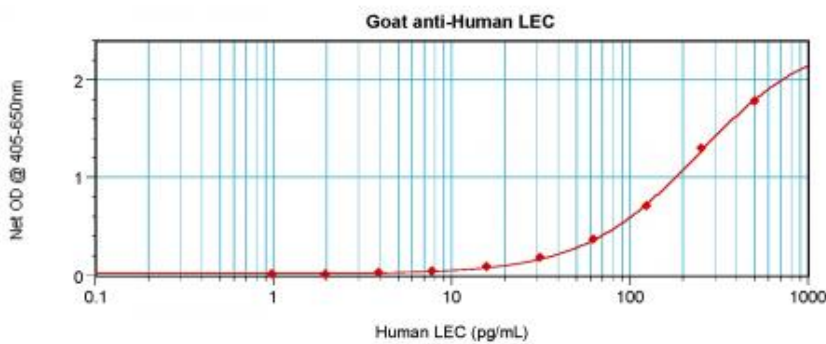


[View online »](#)

Product images:



To detect hLEC by sandwich ELISA (using 100 ul/well antibody solution) a concentration of 0.5 - 2.0 ug/ml of this antibody is required. This antigen affinity purified antibody, in conjunction with Biotinylated Anti-Human LEC ([TA328364]) as a detection antibody, allows the detection of at least 0.2 - 0.4 ng/well of recombinant hLEC.



To detect hLEC by sandwich ELISA (using 100 ul/well antibody solution) a concentration of 0.5 - 2.0 ug/ml of this antibody is required. This antigen affinity purified antibody, in conjunction with Biotinylated Anti-Human LEC ([TA328364]) as a detection antibody, allows the detection of at least 0.2 - 0.4 ng/well of recombinant hLEC.