

Product datasheet for **TA328362**

LD78 beta (CCL3L1) Goat Polyclonal Antibody

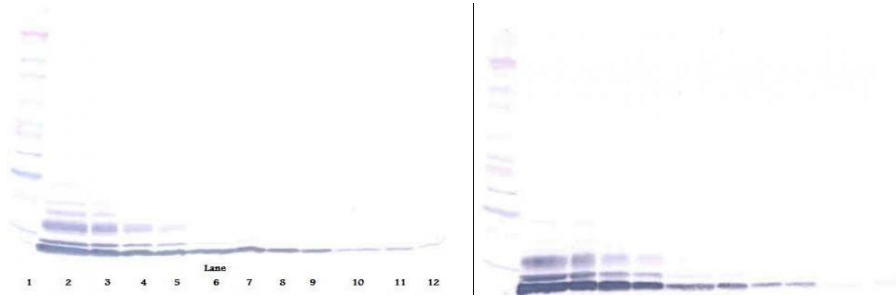
Product data:

Product Type:	Primary Antibodies
Applications:	ELISA, WB
Recommended Dilution:	WB: 0.1-0.2ug/mL, ELISA: 0.25-2ug/mL
Reactivity:	Human
Host:	Goat
Isotype:	IgG
Clonality:	Polyclonal
Immunogen:	E.coli derived Recombinant Human LD78 ¹² (CCL3L1)
Formulation:	A sterile filtered antibody solution was lyophilized from PBS, pH 7.2.
Purification:	Produced from sera of goats pre-immunized with highly pure recombinant Human LD78beta. Anti-Human LD78beta specific antibody was purified by affinity chromatography and then biotinylated.
Conjugation:	Biotin
Storage:	Store at -20°C as received.
Stability:	Stable for 12 months from date of receipt.
Gene Name:	C-C motif chemokine ligand 3 like 1
Database Link:	NP_066286 Entrez Gene 6349 Human P16619
Synonyms:	464.2; D17S1718; G0S19-2; LD78; LD78-beta(1-70); LD78BETA; MIP1AP; SCYA3L; SCYA3L1
Protein Families:	Druggable Genome, Secreted Protein
Protein Pathways:	Chemokine signaling pathway, Cytokine-cytokine receptor interaction

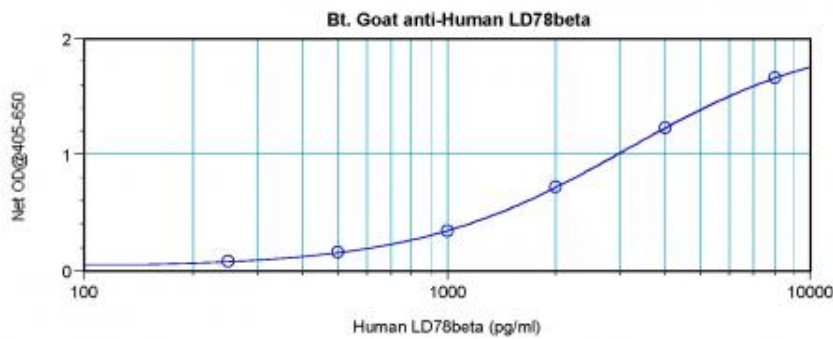


[View online »](#)

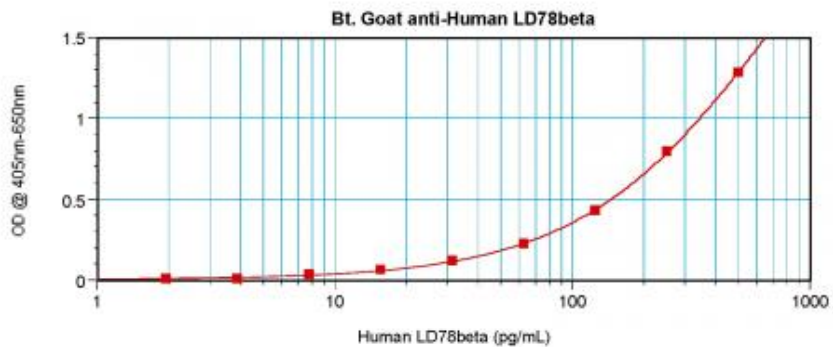
Product images:



To detect Human LD78beta by direct ELISA (using 100 ul/well antibody solution) a concentration of 0.25-1.0 ug/ml of this antibody is required. This biotinylated polyclonal antibody, in conjunction with compatible secondary reagents, allows the detection of at least 0.2-0.4 ng/well of recombinant Human LD78beta.



To detect Human LD78beta by direct ELISA (using 100 ul/well antibody solution) a concentration of 0.25-1.0 ug/ml of this antibody is required. This biotinylated polyclonal antibody, in conjunction with compatible secondary reagents, allows the detection of at least 0.2-0.4 ng/well of recombinant Human LD78beta.



To detect Human LD78beta by sandwich ELISA (using 100 ul/well antibody solution) a concentration of 0.25-1.0 ug/ml of this antibody is required. This biotinylated polyclonal antibody, in conjunction with Polyclonal Anti-Human LD78beta ([TA328363]) as a capture antibody, allows the detection of at least 0.2-0.4 ng/well of recombinant Human LD78beta.